

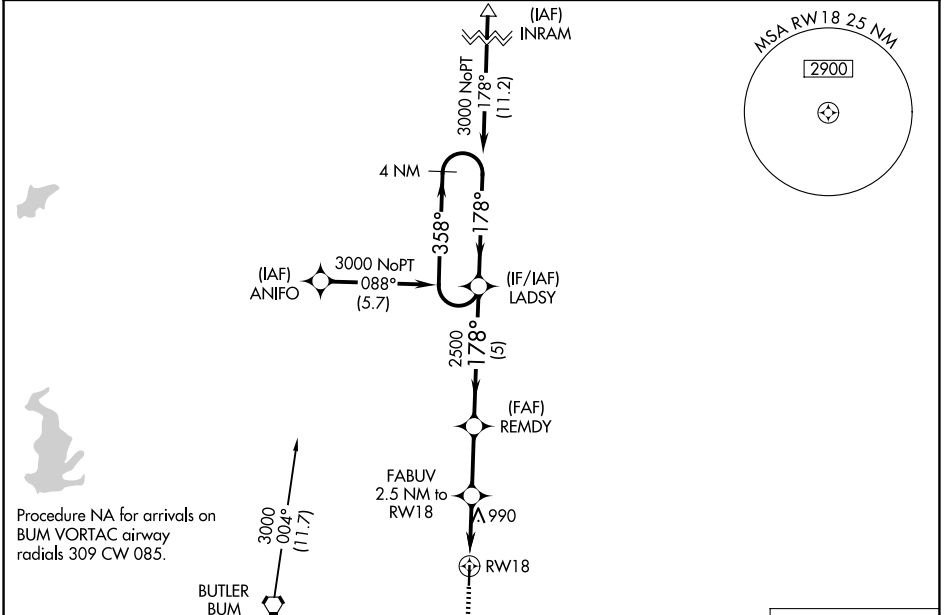
WAAS CH <b>82630</b> <b>W18A</b>	APP CRS <b>178°</b>	Rwy Ldg TDZE Apt Elev	<b>3999</b> <b>888</b> <b>894</b>
--	------------------------	-----------------------------	---

# RNAV (GPS) RWY 18

BUTLER MEML (BUM)

RNP APCH.	MISSED APPROACH: Climb to 4000 direct FONIE and hold, continue climb in hold to 4000.
<p>▼ Baro-VNAV NA. Use Clinton altimeter setting; when not received, use Kansas City Downtown/Wheeler Fld altimeter setting and increase all DA/MDA 60 feet, increase LPV and LNAV/VNAV all Cats visibility 1/2 mile.</p> <p>▲ NA</p>	

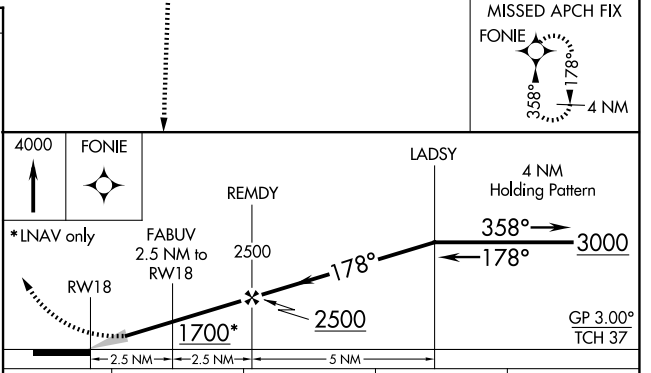
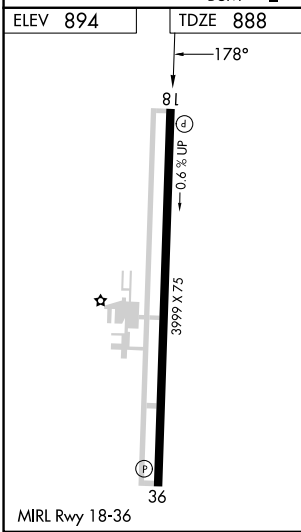
KANSAS CITY CENTER <b>125.55 327.0</b>	CTAF <b>122.9</b>
---	----------------------



NC-3, 07 AUG 2025 to 04 SEP 2025

NC-3, 07 AUG 2025 to 04 SEP 2025

Procedure NA for arrivals on BUM VORTAC airway radials 309 CW 085.



CATEGORY	A	B	C	D
LPV DA	1220-1 1/8	332 (400-1 1/8)		NA
LNAV/VNAV DA	1220-1 1/8	332 (400-1 1/8)		NA
LNAV MDA	1340-1	452 (500-1)		NA