

WAAS CH 93911 W32A	APP CRS 323°	Rwy ldg 7140 TDZE 1302 Apt Elev 1302
--	------------------------	---

RNAV (GPS) RWY 32

BRANSON (BBG)

RNP APCH.

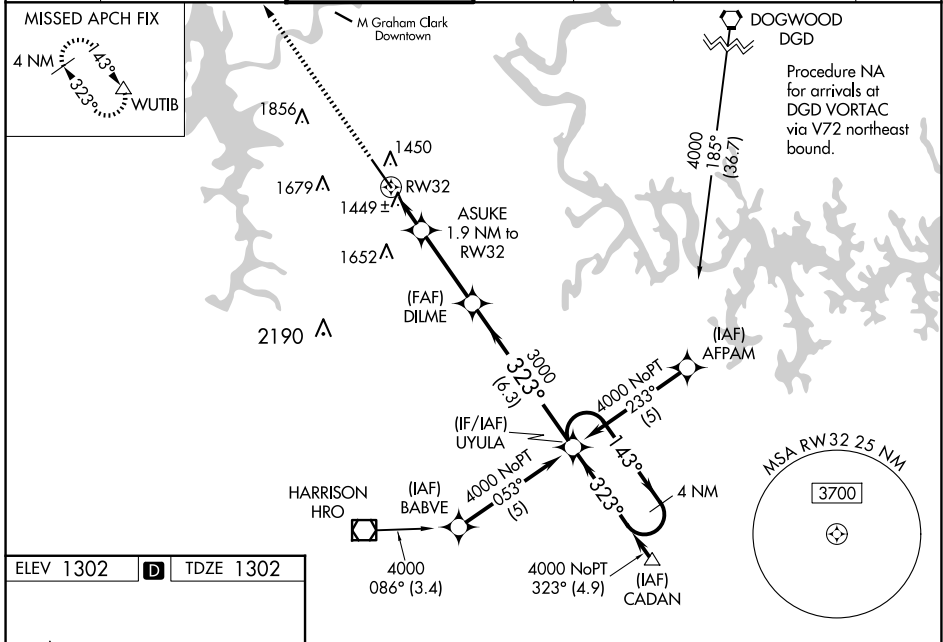
⚠ When local altimeter setting not received, use Harrison altimeter setting: increase LPV DA to 1549 feet; increase LNAV/VNAV DA to 1804 feet and all visibilities $\frac{1}{4}$ SM; increase all MDAs 60 feet and visibility Cats C and D $\frac{1}{2}$ SM. VDP and Baro-VNAV NA when using Harrison altimeter setting. For uncompensated Baro-VNAV systems, LNAV/VNAV NA below -17°C (2°F) or above 46°C (114°F). Inop table does not apply.

MALSF

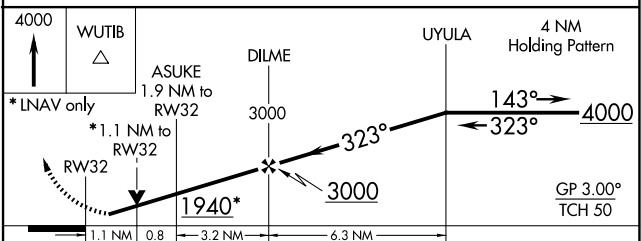
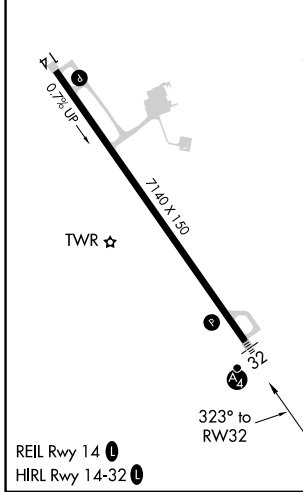


MISSED APPROACH: Climb to 4000 direct WUTIB and hold.

ATIS 124.625	SPRINGFIELD APP CON 126.35	BRANSON TOWER * 128.15 (CTAF) 0	GND CON 118.4	CLNC DEL 118.4	SPRINGFIELD CLNC DEL 126.35 (When tower closed)	UNICOM 122.95
------------------------	--------------------------------------	---	-------------------------	--------------------------	--	-------------------------



ELEV 1302	D	TDZE 1302
-----------	----------	-----------



CATEGORY	A	B	C	D
LPV DA	1502-1		200 (200-1)	
LNAV/VNAV DA	1757-1 $\frac{1}{2}$		455 (500-1 $\frac{1}{2}$)	
LNAV MDA	1700-1		398 (400-1)	
CIRCLING	1760-1	1900-1	2220-2 $\frac{3}{4}$	2220-3
	458 (500-1)	598 (600-1)	918 (1000-2 $\frac{3}{4}$)	918 (1000-3)

NC-3, 15 MAY 2025 to 12 JUN 2025

NC-3, 15 MAY 2025 to 12 JUN 2025