

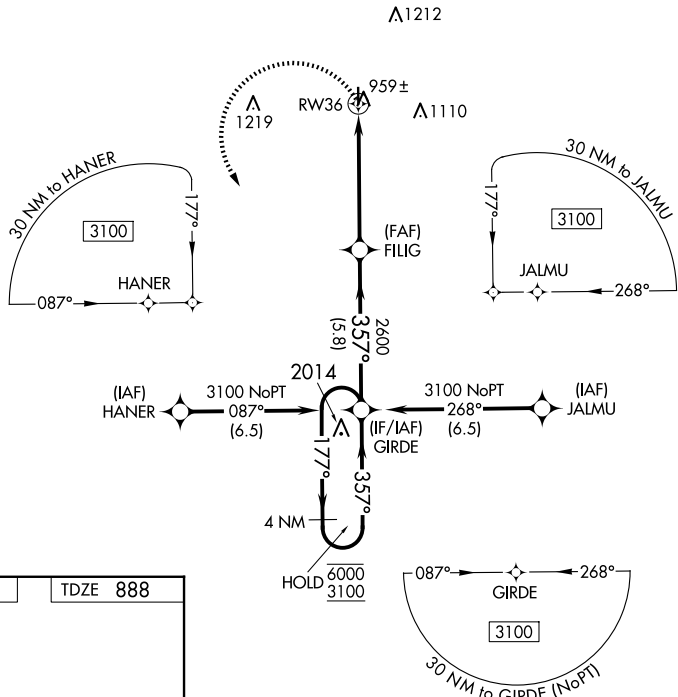
APP CRS	Rwy Idg	3401
357°	TDZE	888
	Apt Elev	888

RNAV (GPS) RWY 36

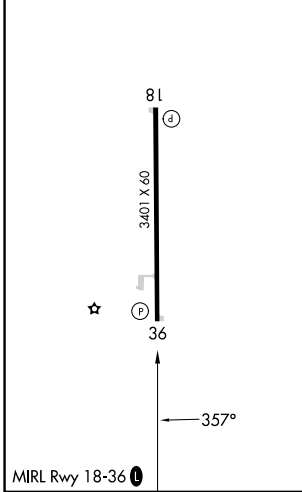
BLOOMFIELD MUNI (4K6)

RNP APCH - GPS.	MISSED APPROACH: Climbing left turn to 3100 direct GIRDE and hold.
<p>▼ Rwy 36 helicopter visibility reduction below 1 SM NA.</p> <p>▲ NA Procedure NA at night. Use Ottumwa altimeter setting; when not received, procedure NA.</p>	

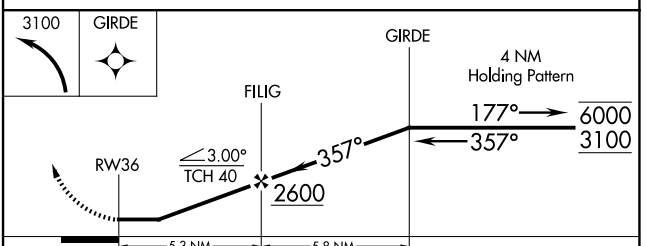
KOTM ASOS 124.175	CHICAGO CENTER 118.15 335.575	UNICOM 122.8 (CTAF) 0
-----------------------------	---	---------------------------------



ELEV 888	TDZE 888
----------	----------



BLOOMFIELD, IOWA
Amdt 1 05SEP24



CATEGORY	A	B	C	D
LNAV MDA	1420-1	532 (600-1)	1420-1½ 532 (600-1½)	NA
CIRCLING	1500-1 612 (700-1)	1520-1 632 (700-1)	1580-2 692 (700-2)	NA

40°44'N-92°26'W

RNAV (GPS) RWY 36

NC-3, 15 MAY 2025 to 12 JUN 2025

NC-3, 15 MAY 2025 to 12 JUN 2025