

| | | | |
|--|------------------------|-----------------------------|---|
| WAAS CH 99436 W35A | APP CRS 354° | Rwy Idg TDZE Apt Elev | 5506 1155 1160 |
|--|------------------------|-----------------------------|---|

RNAV (GPS) RWY 35

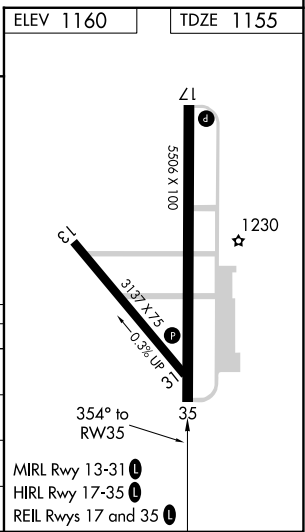
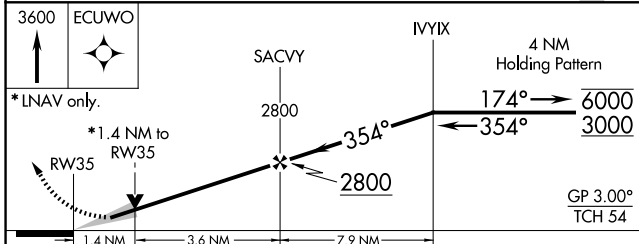
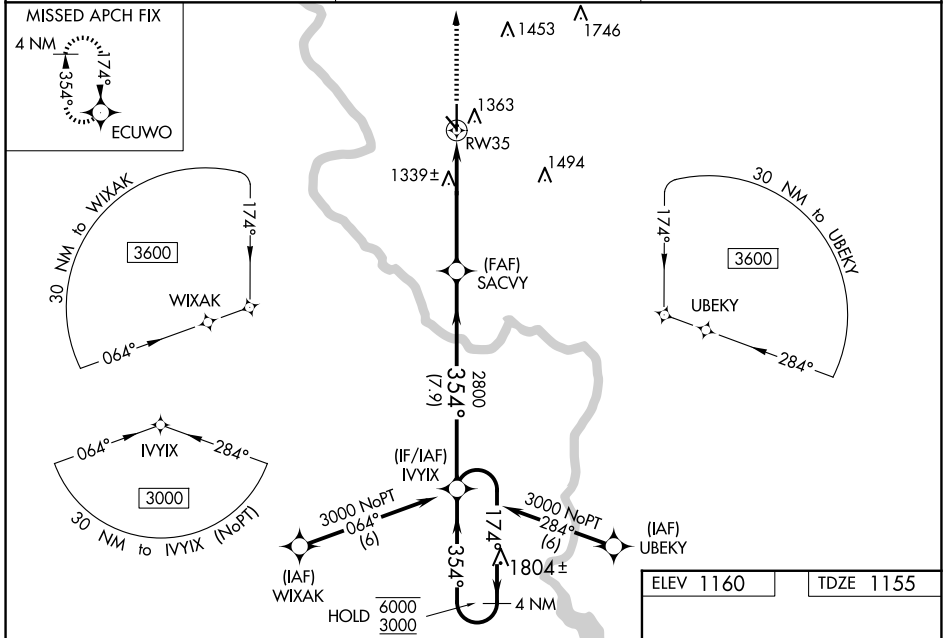
STROTHER FLD (WLD)

RNP APCH.

Baro-VNAV and VDP NA when using Wichita Dwight D Eisenhower NH altimeter setting. For uncompensated Baro-VNAV systems, LNAV/VNAV NA below -15°C or above 54°C. When local altimeter setting not received, use Wichita Dwight D Eisenhower NH altimeter setting: increase LPV DA to 1509 feet and all visibilities ¼ SM; increase LNAV/VNAV DA to 1557 feet and all visibilities ¼ SM; increase all MDA 120 feet, LNAV Cat C visibility ⅓ SM and Circling Cat C visibility ¼ SM.

MISSED APPROACH:
Climb to 3600 direct ECUWO and hold.

| | | |
|------------------------|--|-------------------------------|
| ASOS 118.025 | KANSAS CITY CENTER 127.8 319.1 | UNICOM 122.8 (CTAF) |
|------------------------|--|-------------------------------|



| CATEGORY | A | B | C | D |
|-------------------|--------|-------------|-------------------------|----|
| LPV DA | 1405-¾ | 250 (300-¾) | | NA |
| LNAV/VNAV DA | 1453-1 | 298 (300-1) | | NA |
| LNAV MDA | 1640-1 | 485 (500-1) | 1640-1⅓ 485 (500-1⅓) | NA |
| C CIRCLING | 1680-1 | 520 (600-1) | 1680-1½ 520 (600-1½) | NA |

NC-2, 15 MAY 2025 to 12 JUN 2025

NC-2, 15 MAY 2025 to 12 JUN 2025