

WAAS CH 61037 W14A	APP CRS 137°	Rwy Idg TDZE Apt Elev	4321 2589 2595
--	------------------------	-----------------------------	---

RNAV (GPS) RWY 14

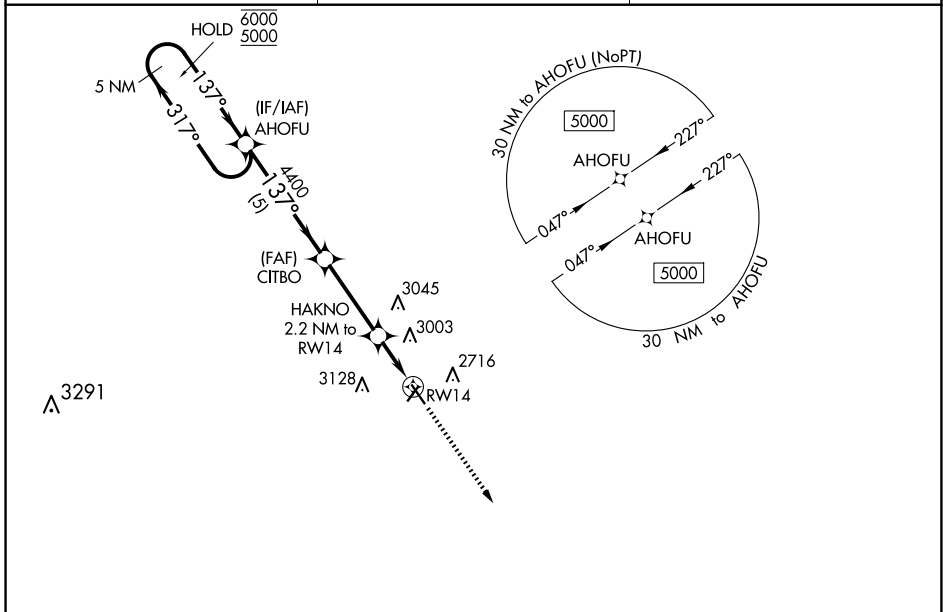
MILLER FLD (VTN)

RNP APCH.

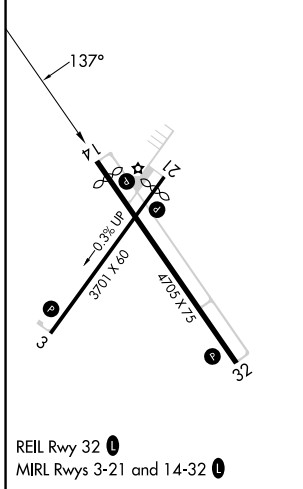
⚠ For uncompensated Baro-VNAV systems, LNAV/VNAV NA below -25°C or above 54°C .
Rwy 14 helicopter visibility reduction below ¾ SM NA.

MISSED APPROACH:
Climb to 5000 direct
GIYIT and hold.

ASOS 118.075	DENVER CENTER 127.95 338.2	UNICOM 122.8 (CTAF) 0
------------------------	--------------------------------------	---------------------------------



ELEV 2595	TDZE 2589
-----------	-----------



REIL Rwy 32 **0**
MIRL Rwys 3-21 and 14-32 **0**



5 NM Holding Pattern	AHOFU	CITBO	HAKNO 2.2 NM to RWY14	5000	GIYIT
6000 ← 317°	→ 137°	4400	*1.7 NM to RWY14	↑	⬠
5000 → 137°	→ 137°	4400	*3320		
GP 3.00°					
TCH 40					
	5 NM	3.4 NM	0.5	1.7 NM	
CATEGORY	A	B	C	D	
LPV DA	2861-1	272 (300-1)		NA	
LNAV/VNAV DA	3239-2¼	650 (700-2¼)		NA	
LNAV MDA	3160-1	571 (600-1)		NA	
C CIRCLING	3160-1 565 (600-1)	3560-1½ 965 (1000-1½)		NA	

NC-2, 15 MAY 2025 to 12 JUN 2025

NC-2, 15 MAY 2025 to 12 JUN 2025