

WAAS CH 90237 W03A	APP CRS 028°	Rwy Idg 3701 TDZE 2595 Apt Elev 2595
--	------------------------	---

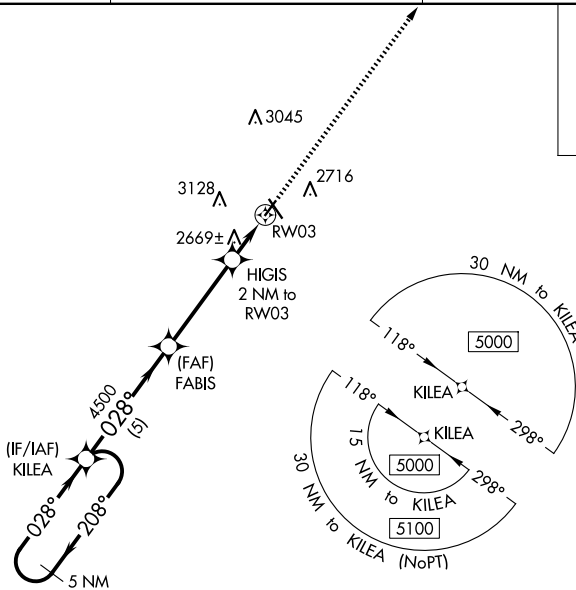
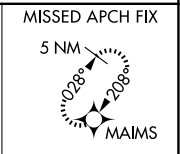
RNAV (GPS) RWY 3

MILLER FLD (VTN)

⚠ Baro-VNAV NA when using Ainsworth Rgnl altimeter setting. For uncompensated Baro-VNAV systems, LNAV/VNAV NA below -25°C (-13°F) or above 54°C (130°F). DME/DME RNP-0.3 NA. VDP NA with Ainsworth Rgnl altimeter setting. When local altimeter setting not received, use Ainsworth Rgnl altimeter setting and increase all DA 70 feet and all MDA 80 feet, increase LNAV/VNAV Cat A/B visibility 1/8 mile.

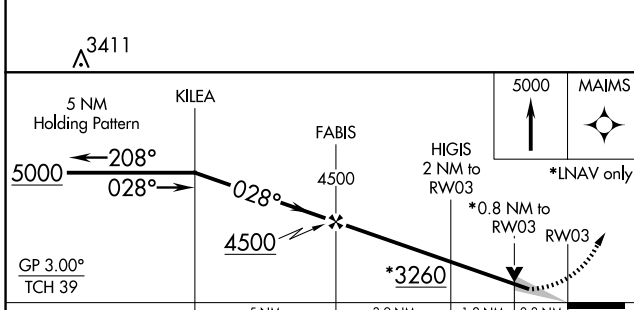
MISSED APPROACH:
Climb to 5000 direct MAIMS and hold.

ASOS 118.075	DENVER CENTER 127.95 338.2	UNICOM 122.8 (CTAF) 1
------------------------	--------------------------------------	---------------------------------

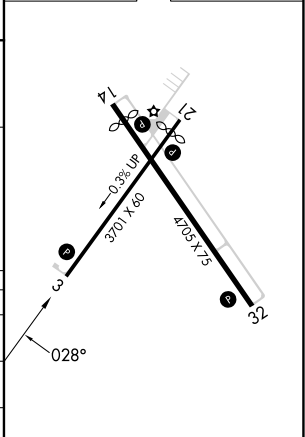


NC-2, 15 MAY 2025 to 12 JUN 2025

NC-2, 15 MAY 2025 to 12 JUN 2025



ELEV 2595	TDZE 2595
-----------	-----------



GP 3.00° TCH 39	5000	4500	3260	5000	MAIMS
	5 NM	3.9 NM	1.2 NM	0.8 NM	
CATEGORY	A	B	C	D	
LPV DA	2845-1	250 (300-1)		NA	
LNAV/VNAV DA	2845-1	250 (300-1)		NA	
LNAV MDA	2920-1	325 (400-1)		NA	
CIRCLING	3080-1 485 (500-1)	3560-1½ 965 (1000-1½)		NA	

REIL Rwy 32 1
MIRL Rwy 3-21 and 14-32 1