

| | | | |
|--|------------------------|-----------------------------|---|
| WAAS CH 69218 W11A | APP CRS 110° | Rwy Idg TDZE Apt Elev | 4402 2925 2925 |
|--|------------------------|-----------------------------|---|

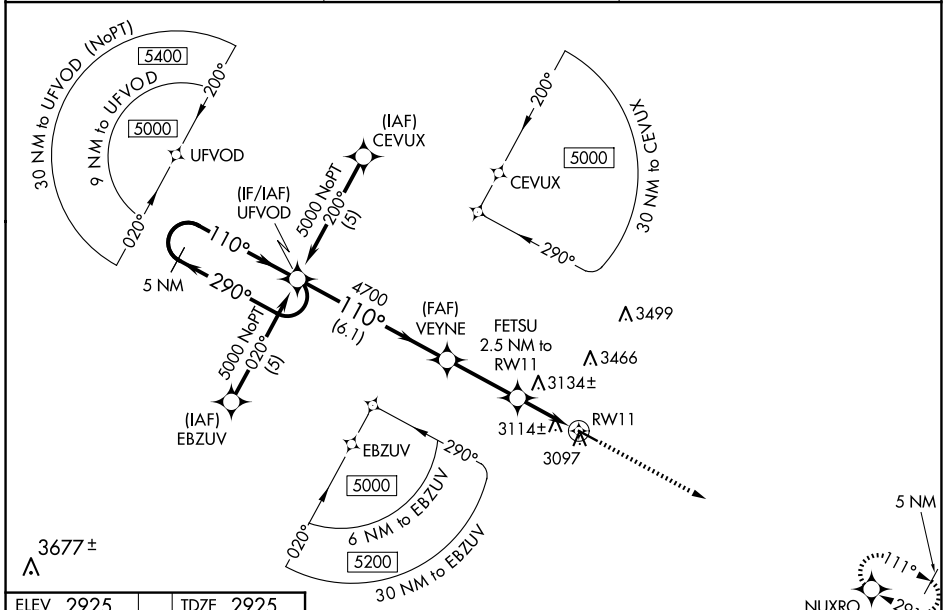
RNAV (GPS) RWY 11

THOMAS COUNTY (TIF)

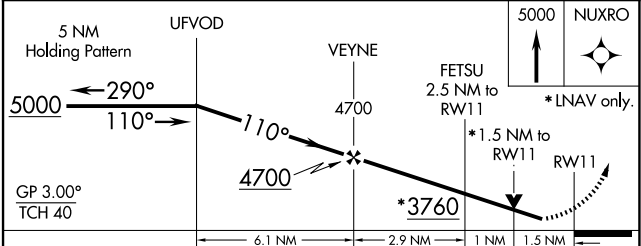
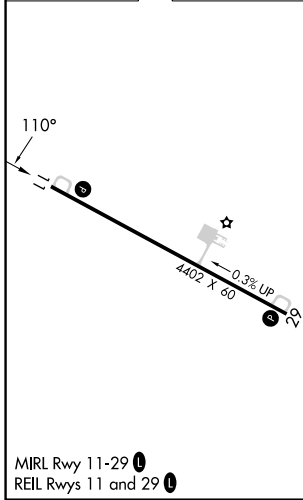
⚠ Baro-VNAV NA when using North Platte altimeter setting. For uncompensated Baro-VNAV systems, LNAV/VNAV NA below -20°C (-4°F) or above 54°C (130°F). DME/DME RNP-0.3 NA. Visibility reduction by helicopters NA. When local altimeter setting not received use North Platte altimeter setting and increase all DA 137 feet and all MDA 140 feet, increase LPV and LNAV/VNAV Cats A and B visibility ½ mile. VDP NA with North Platte altimeter setting.

MISSED APPROACH: Climb to 5000 direct NUXRO and hold.

| | | |
|--------------------------|--------------------------------------|----------------------|
| AWOS-3 120.825 | DENVER CENTER 127.95 338.2 | CTAF 122.9 |
|--------------------------|--------------------------------------|----------------------|



| | |
|-----------|-----------|
| ELEV 2925 | TDZE 2925 |
|-----------|-----------|



| CATEGORY | A | B | C | D |
|--------------|--------|-------------|---|----|
| LPV DA | 3175-1 | 250 (300-1) | | NA |
| LNAV/VNAV DA | 3490-2 | 565 (600-2) | | NA |
| LNAV MDA | 3440-1 | 515 (600-1) | | NA |
| CIRCLING | 3480-1 | 555 (600-1) | | NA |

NC-2, 15 MAY 2025 to 12 JUN 2025

NC-2, 15 MAY 2025 to 12 JUN 2025