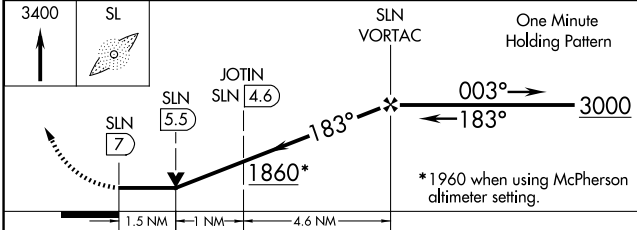
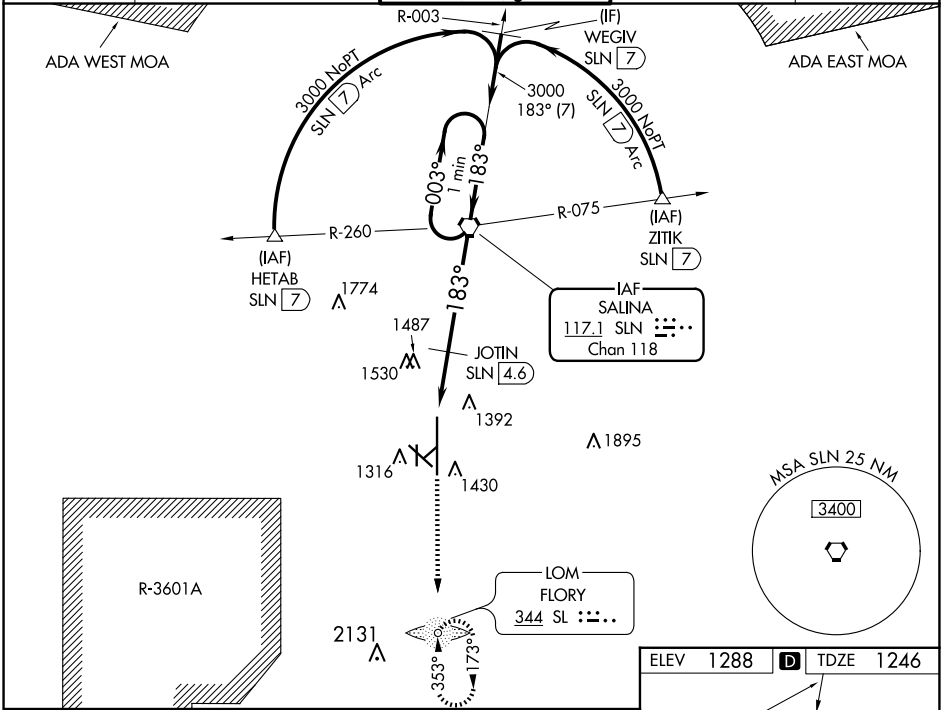


VORTAC SLN <b>117.1</b> Chan <b>118</b>	APP CRS <b>183°</b>	Rwy Idg <b>12300</b> TDZE <b>1246</b> Apt Elev <b>1288</b>
---	------------------------	--

# VOR RWY 17

SALINA RGNL (SLN)

<p><b>▽</b> Inoperative table does not apply to Cat C/D/E. <b>▲</b> Circling NA for Cat D/E southwest of Rwy 12-30. ADF required.</p>	<p>MALS</p>	<p>MISSED APPROACH: Climb to 3400 direct SL LOM and hold.</p>		
			<p>ATIS <b>120.15</b></p>	<p>KANSAS CITY CENTER <b>134.9 363.2</b></p>



ELEV 1288	<b>D</b>	TDZE 1246
-----------	----------	-----------

JOTIN FIX MINIMUMS				
S-17	1760- <sup>3</sup> / <sub>4</sub> 514 (500- <sup>3</sup> / <sub>4</sub> )	1760-1 <sup>1</sup> / <sub>2</sub> 514 (500-1 <sup>1</sup> / <sub>2</sub> )	1760-1 <sup>3</sup> / <sub>4</sub> 514 (500-1 <sup>3</sup> / <sub>4</sub> )	514 (500-1 <sup>3</sup> / <sub>4</sub> )
CIRCLING	1820-1 532 (600-1)	1840-1 552 (600-1)	1860-1 <sup>1</sup> / <sub>2</sub> 572 (600-1 <sup>1</sup> / <sub>2</sub> )	1860-2 572 (600-2)
FAF to MAP 7 NM				
Knots	60	90	120	150 180
Min:Sec	7:00	4:40	3:30	2:48 2:20

NC-2, 15 MAY 2025 to 12 JUN 2025

NC-2, 15 MAY 2025 to 12 JUN 2025