

WAAS CH <b>58034</b> <b>W17A</b>	APP CRS <b>176°</b>	Rwy Idg TDZE Apt Elev	<b>4200</b> <b>1318</b> <b>1325</b>
--	------------------------	-----------------------------	---

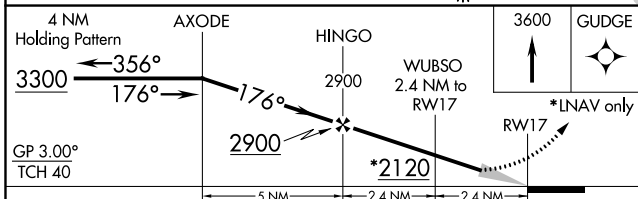
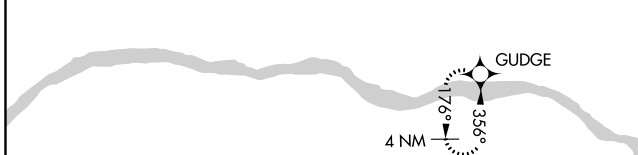
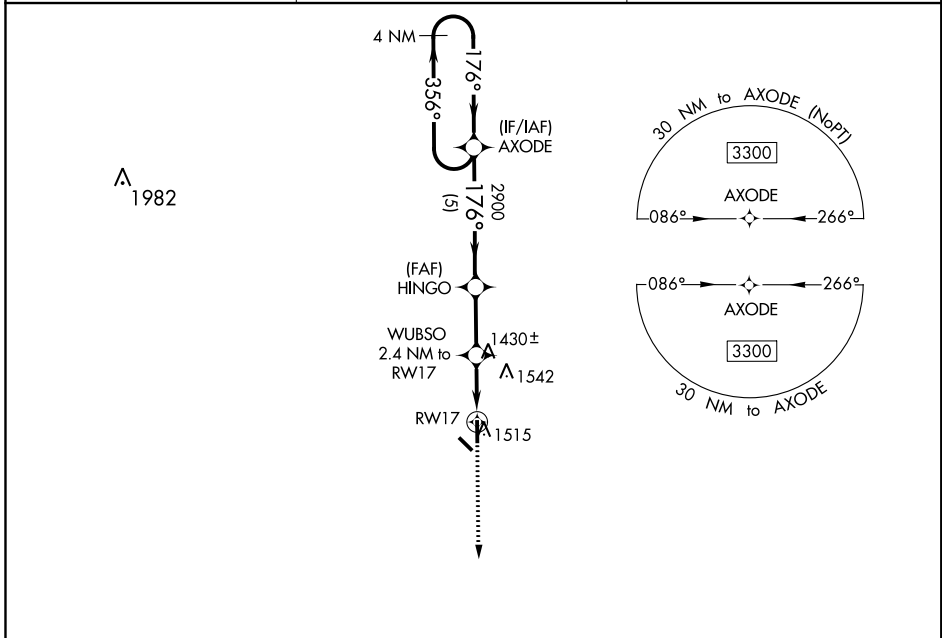
# RNAV (GPS) RWY 17

SCRIBNER STATE (SCB)

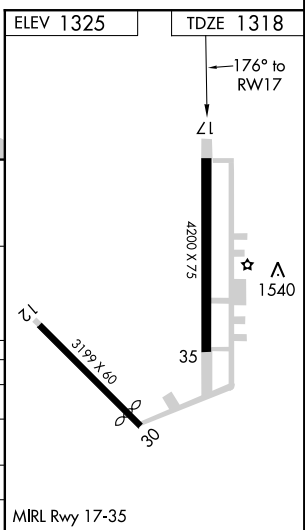
**NA** DME/DME RNP-0.3 NA. Use Fremont altimeter setting, when not received, use Wahoo altimeter setting and increase all DA 24 feet and all MDA 40 feet and LPV Cots A and B visibility 1/8 mile. Helicopter visibility reduction below 3/4 SM NA. Baro-VNAV NA.

MISSED APPROACH: Climb to 3600 direct GUDGE and hold.

FREMONT AWOS-3 <b>121.275</b>	OMAHA APP CON <b>120.1 354.05</b>	CTAF <b>122.9</b>
----------------------------------	--------------------------------------	----------------------



CATEGORY	A	B	C	D
LPV DA	1560-3/4	242 (300-3/4)		NA
LNAV/VNAV DA	1610-1	292 (300-1)		NA
LNAV MDA	1740-1	422 (500-1)		NA
<b>CIRCLING</b>	1900-1	575 (600-1)		NA



NC-2, 24 MAY 2018 to 21 JUN 2018

NC-2, 24 MAY 2018 to 21 JUN 2018