

WAAS CH <b>86726</b> <b>W17A</b>	APP CRS <b>176°</b>	Rwy Idg TDZE Apt Elev	<b>4500</b> <b>964</b> <b>966</b>
--	------------------------	-----------------------------	---

# RNAV (GPS) RWY 17

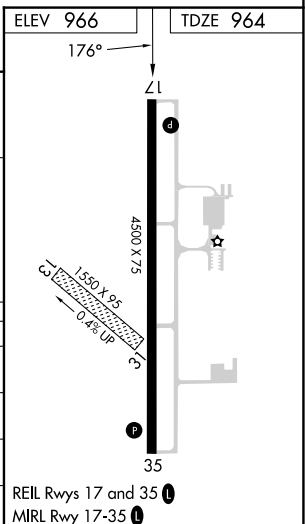
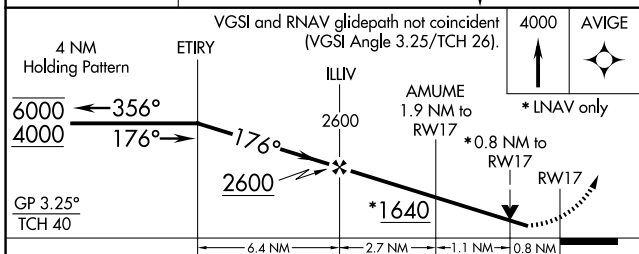
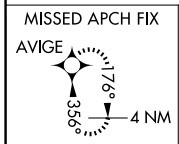
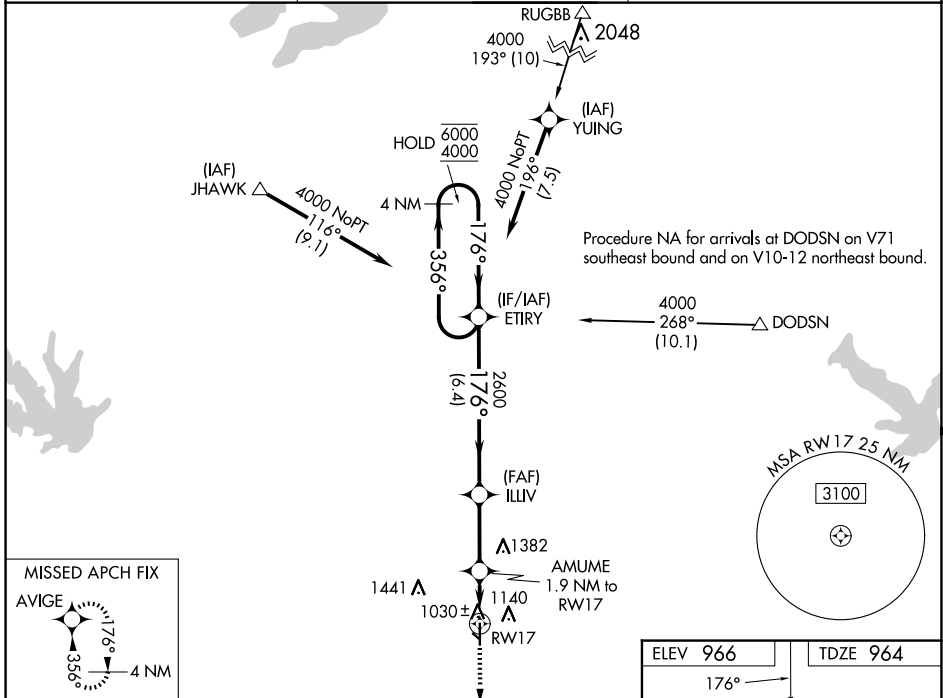
OTTAWA MUNI (OWI)

RNP APCH.

▼ Circling NA to Rwy 13 and 31. Rwy 17 helicopter visibility reduction below 3/4 SM NA.  
 ▲ For uncompensated Baro-VNAV systems, LNAV/VNAV NA below -16°C or above 54°C.

MISSED APPROACH: Climb to 4000 direct AVIGE and hold, continue climb-in-hold to 4000.

AWOS-3PT <b>118.25</b>	KANSAS CITY CENTER <b>127.725 270.25</b>	UNICOM <b>122.8 (CTAF) 0</b>
---------------------------	---	---------------------------------



CATEGORY	A	B	C	D
LPV DA	1214-1	250 (300-1)		NA
LNAV/VNAV DA	1214-1	250 (300-1)		NA
LNAV MDA	1280-1	316 (400-1)		NA
<b>C</b> CIRCLING	1500-1	534 (600-1)	1760-2 1/4 794 (800-2 1/4)	NA

NC-2, 15 MAY 2025 to 12 JUN 2025

NC-2, 15 MAY 2025 to 12 JUN 2025