

APP CRS	Rwy Idg	<b>8013</b>
	TDZE	<b>982</b>
<b>178°</b>	Apt Elev	<b>985</b>

# RNAV (RNP) Z RWY 18

EPPLEY AIRFIELD (OMA)

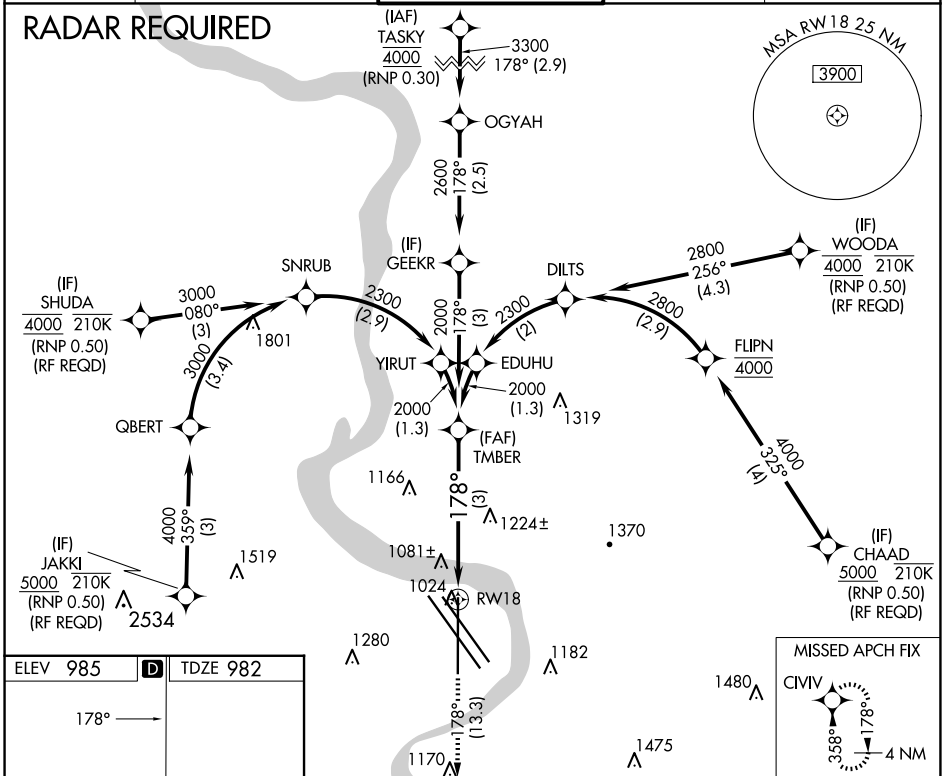
**▼** For uncompensated Baro-VNAV systems, procedure NA below -17°C (2°F) or above 54°C (130°F). For inoperative ALS, increase RNP 0.15 all Cats visibility to 1½ and RNP 0.30 all Cats visibility to 2. GPS required.



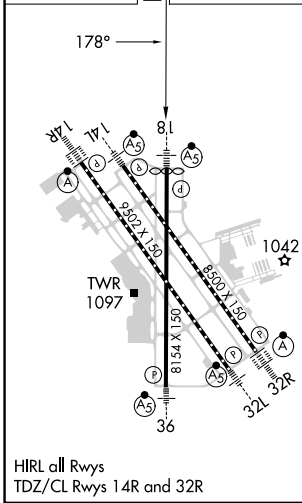
MISSED APPROACH: Climb to 3000 on track 178° to CIVIV and hold.

D-ATIS	OMAHA APP CON	OMAHA TOWER	GND CON	CLNC DEL
<b>120.4</b>	<b>135.875 354.05</b>	<b>132.1 256.9</b>	<b>121.9</b>	<b>119.9</b>

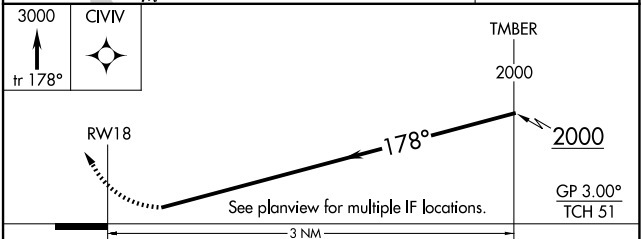
## RADAR REQUIRED



ELEV 985	<b>D</b>	TDZE 982
----------	----------	----------



HIRL all Rwys  
TDZ/CL Rwys 14R and 32R



CATEGORY	A	B	C	D
RNP 0.15 DA		1341/40	359 (400-¾)	
RNP 0.30 DA		1576-1½	594 (600-1½)	

## AUTHORIZATION REQUIRED

NC-2, 15 MAY 2025 to 12 JUN 2025

NC-2, 15 MAY 2025 to 12 JUN 2025