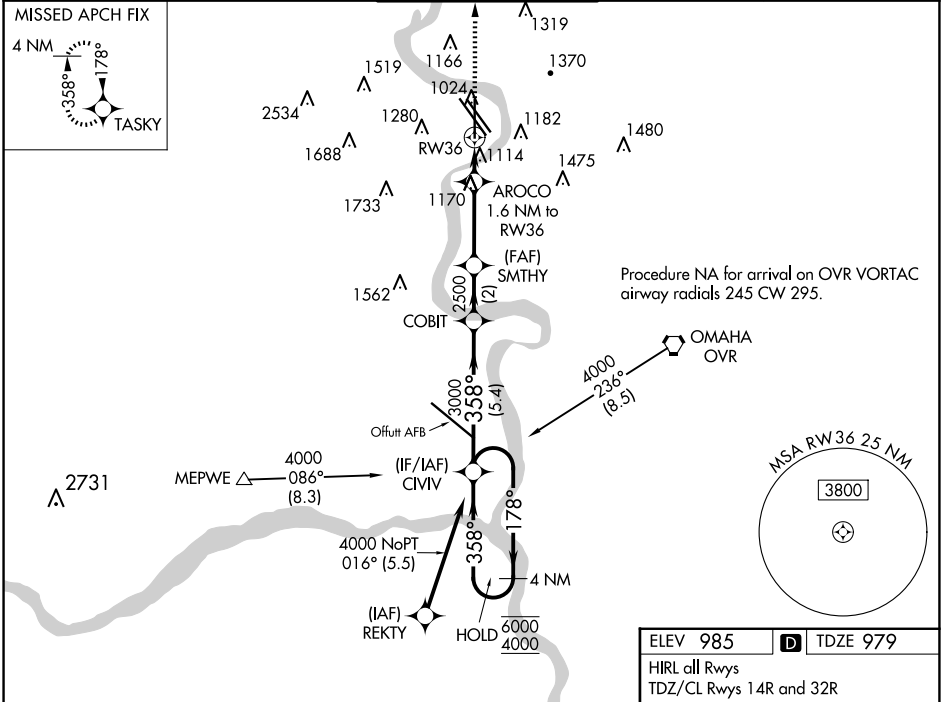


WAAS CH <b>70317</b> <b>W36A</b>	APP CRS <b>358°</b>	Rwy Idg <b>8153</b> TDZE <b>979</b> Apt Elev <b>985</b>
--	------------------------	---

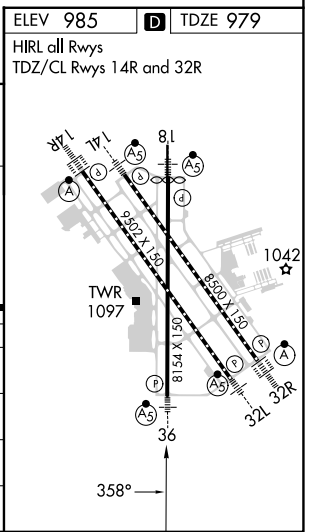
# RNAV (GPS) Y RWY 36

EPPLEY AIRFIELD (OMA)

RNP APCH - GPS.		MALSR 	MISSED APPROACH: Climb to 3000 direct TASKY and hold.	
▼ For uncompensated Baro-VNAV systems, LNAV/VNAV NA below -19°C or above 54°C. For inop ALS, increase LNAV Cat C and D visibilities to 1½ SM. ▲			D-ATIS <b>120.4</b>	OMAHA APP CON <b>135.875 354.05</b>
		OMAHA TOWER <b>132.1 256.9</b>	GND CON <b>121.9</b>	CLNC DEL <b>119.9</b>



4 NM Holding Pattern 6000 ← 178° 4000 → 358° GP 3.00° TCH 58	CIVV COBIT SMTHY AROCO 1.6 NM to RW36 1.1 NM to RW36	3000 TASKY 4000 NoPT 016° (5.5) HOLD 6000/4000	CATEGORY      A                      B                      C                      D			
			LPV DA	1179-½	200 (200-½)	
LNAV/VNAV DA	1372-5/8	393 (400-5/8)				
LNAV MDA	1380-½	401 (400-½)	1380-¾	401 (400-¾)		
C CIRCLING	1660-1 675 (700-1)	1680-1 695 (700-1)	2000-3 1015 (1100-3)	2040-3 1055 (1100-3)		



NC-2, 15 MAY 2025 to 12 JUN 2025

NC-2, 15 MAY 2025 to 12 JUN 2025