

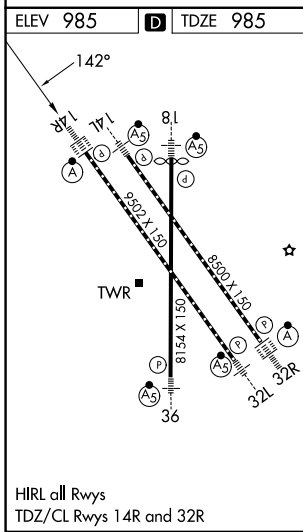
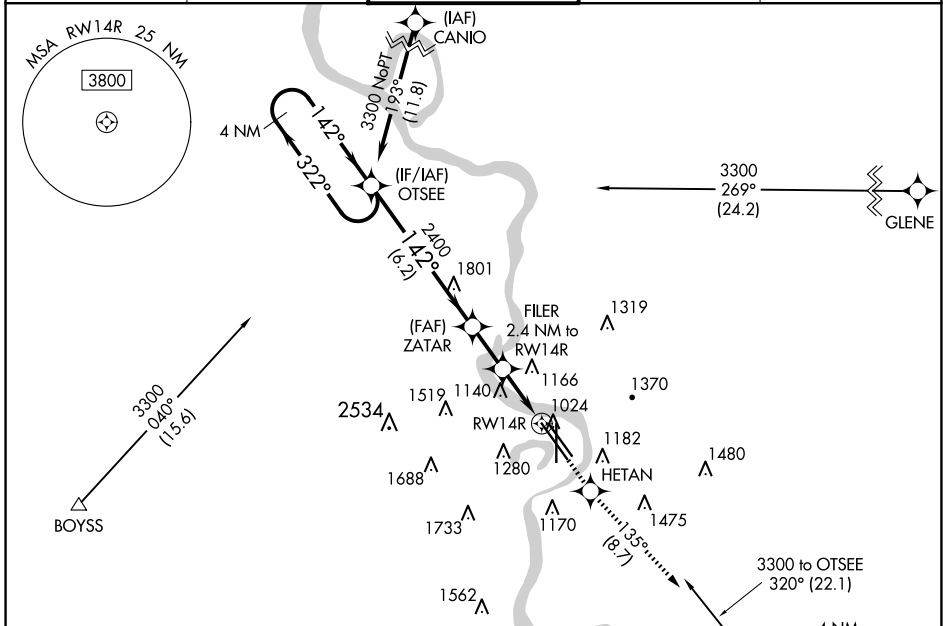
WAAS CH 56217 W14A	APP CRS 142°	Rwy Ldg TDZE Apt Elev	9502 985 985
--	------------------------	-----------------------------	---

RNAV (GPS) Y RWY 14R

EPPLEY AIRFIELD (OMA)

RNP APCH.	ALSF-2	MISSED APPROACH: Climb to 3000 direct HETAN and on track 135° to OVR VORTAC and hold.
<p>▼ For uncompensated Baro-VNAV systems, LNAV/VNAV NA below -19°C (-2°F) or above 54°C (130°F). ▲ For inop ALS, increase LNAV/VNAV all Cats visibility to 1 3/8 SM.</p>		

D-ATIS 120.4	OMAHA APP CON 135.875 354.05	OMAHA TOWER 132.1 256.9	GND CON 121.9	CLNC DEL 119.9
------------------------	--	-----------------------------------	-------------------------	--------------------------



Procedure NA for arrival on OVR VORTAC
airway radials 245 CW 258 and
on airway radials 295 CW 312.

ELEV 985	D	TDZE 985		
<p>4 NM Holding Pattern</p> <p>3000 ← 322° → 2400</p> <p>GP 3.00° TCH 57</p>				
<p>OTSEE</p> <p>ZATAR</p> <p>FILER 2.4 NM to RWY14R</p> <p>HETAN</p> <p>OMAHA OVR</p>				
<p>*LNAV only</p> <p>*1.1 NM to RWY14R</p>				
CATEGORY	A	B	C	D
LPV DA	1185/18		200 (200-1/2)	
LNAV/VNAV DA	1465/50		480 (500-1)	
LNAV MDA	1380/24		1380/35 395 (400-3/8)	
CIRCLING	1660-1 675 (700-1)	1680-1 695 (700-1)	2000-3 1015 (1100-3)	2040-3 1055 (1100-3)

NC-2, 07 AUG 2025 to 04 SEP 2025

NC-2, 07 AUG 2025 to 04 SEP 2025