

WAAS CH <b>82229</b> <b>W31A</b>	APP CRS <b>317°</b>	Rwy Idg TDZE Apt Elev	<b>3700</b> <b>3272</b> <b>3279</b>
--	------------------------	-----------------------------	---

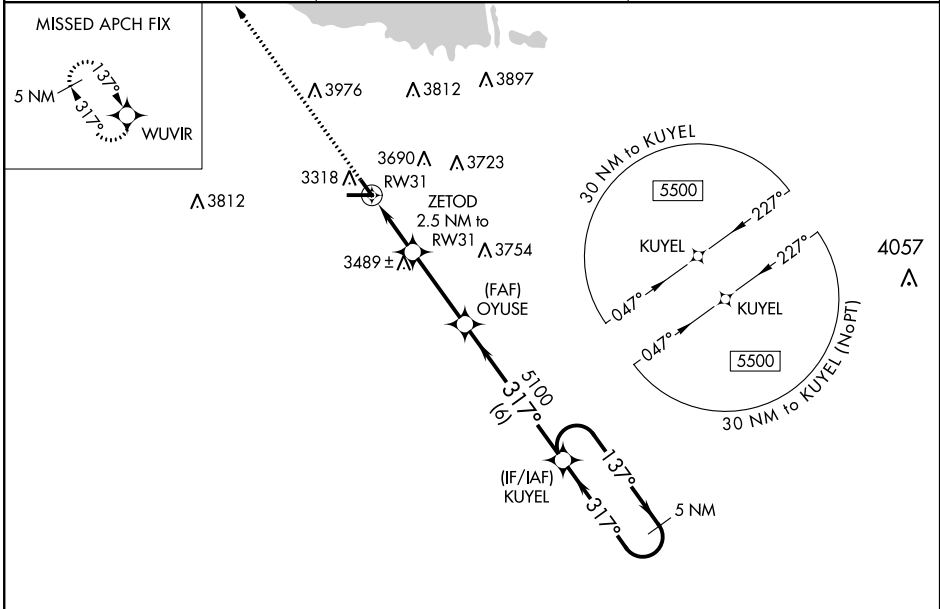
# RNAV (GPS) RWY 31

SEARLE FIELD (OGA)

**⚠** Baro-VNAV and VDP NA when using Imperial altimeter setting. For uncompensated Baro-VNAV systems, LNAV/VNAV NA below -21°C (-5°F) or above 54°C (130°F). DME/DME RNP-0.3 NA.  
**⚠** Helicopter visibility reduction below 3/4 SM NA. When local altimeter setting not received, use Imperial altimeter setting and increase all DA 86 feet and all MDA 100 feet, increase LPV and LNAV/VNAV Cat A/B visibility to 1/2. Night Landing: Rwy 8 NA.

**MISSED APPROACH:**  
Climb to 5400 direct WUVIR and hold.

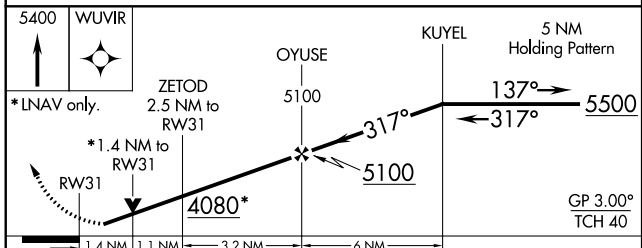
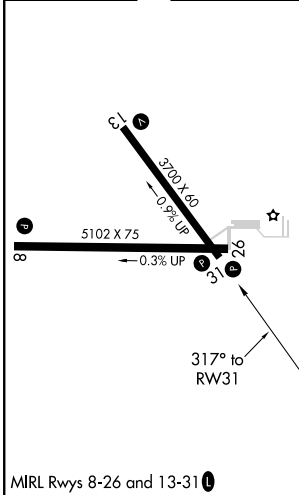
AWOS-3 <b>121.275</b>	DENVER CENTER <b>132.7 397.85</b>	UNICOM <b>122.8 (CTAF) ①</b>
--------------------------	--------------------------------------	---------------------------------



NC-2. 09 NOV 2017 to 07 DEC 2017

NC-2. 09 NOV 2017 to 07 DEC 2017

ELEV 3279	TDZE 3272
-----------	-----------



CATEGORY	A	B	C	D
LPV DA	3522-1	250 (300-1)		NA
LNAV/VNAV DA	3522-1	250 (300-1)		NA
LNAV MDA	3740-1	468 (500-1)		NA
CIRCLING	3920-1 641 (700-1)	3960-1 681 (700-1)		NA