

WAAS CH <b>53303</b> <b>W26A</b>	APP CRS <b>263°</b>	Rwy Idg TDZE Apt Elev	<b>5102</b> <b>3254</b> <b>3279</b>
--	------------------------	-----------------------------	---

# RNAV (GPS) RWY 26

SEARLE FIELD (OGA)

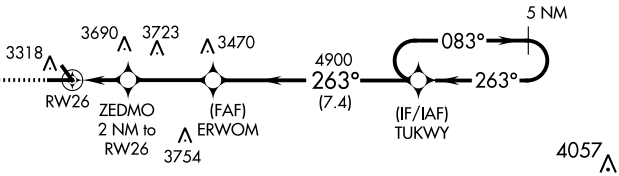
**⚠** When local altimeter setting not received, use Imperial altimeter setting and increase all DA 86 feet and all MDA 100 feet, increase LPV all Cats visibility 1/8 mile, LNAV/VNAV all Cats visibility 1/4 mile. DME/DME RNP-0.3 NA. VDP and Baro-VNAV NA when using Imperial altimeter setting. Night Landing: Rwy 8 NA.

MISSED APPROACH: Climb to 5300 direct AHUFU and hold.

AWOS-3 <b>121.275</b>	DENVER CENTER <b>132.7 397.85</b>	UNICOM <b>122.8 (CTAF) 0</b>
--------------------------	--------------------------------------	---------------------------------

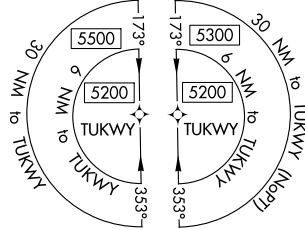


▲ 3976    ▲ 3812    ▲ 3897

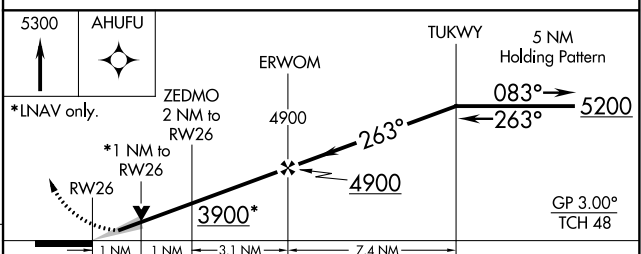
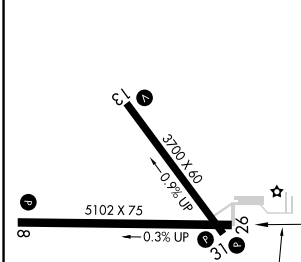


NC-2, 14 SEP 2017 to 12 OCT 2017

NC-2, 14 SEP 2017 to 12 OCT 2017



ELEV 3279	TDZE 3254
-----------	-----------



CATEGORY	A	B	C	D
LPV DA	3504-1	250 (300-1)		NA
LNAV/VNAV DA	3540-1	286 (300-1)		NA
LNAV MDA	3620-1	366 (400-1)		NA
CIRCLING	3920-1	3960-1		NA
	641 (700-1)	681 (700-1)		

MIRL Rwy 8-26 and 13-31 0