

WAAS CH 61205 W36A	APP CRS 360°	Rwy Idg 5503 TDZE 1497 Apt Elev 1498
--	------------------------	---

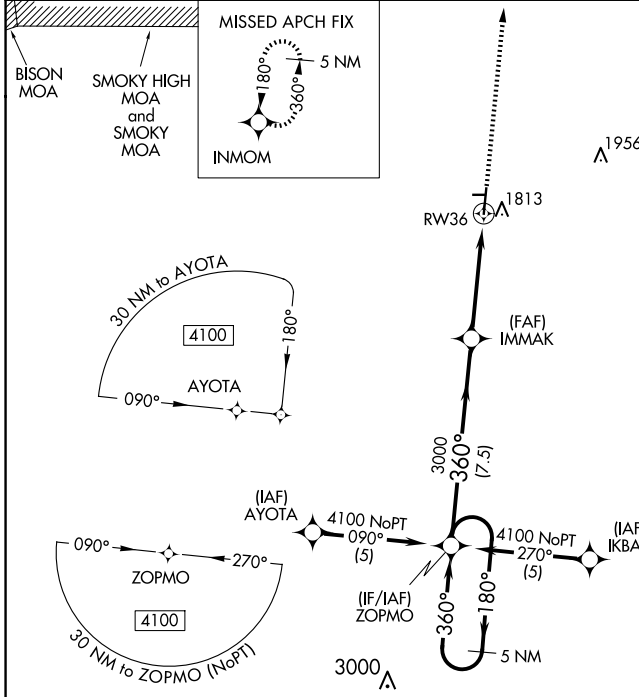
RNAV (GPS) RWY 36

MC PHERSON (MPR)

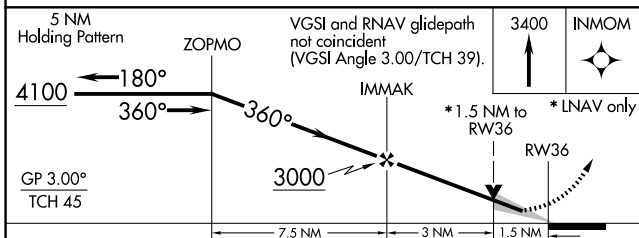
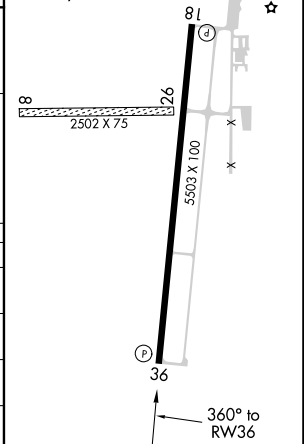
▽ When local altimeter setting not received, use Salina altimeter setting: increase LPV DA to 1838 feet, LNAV/VNAV DA to 2074 feet and all visibilities 3/8 mile; increase all MDA 100 feet and visibility Cat C 1/4 mile. For uncompensated Baro-VNAV systems, LNAV/VNAV NA below -17°C (2°F) or above 54°C (130°F). Baro-VNAV and VDP NA when using Salina altimeter setting. DME/DME RNP-0.3 NA. Circling NA to Rwy's 8 and 26.

MISSED APPROACH:
Climb to 3400 direct INMOM and hold.

AWOS-3P 119.025	WICHITA APP CON 125.5 306.2	UNICOM 122.8 (CTAF) 0
---------------------------	---------------------------------------	---------------------------------



ELEV 1498	TDZE 1497
MIRL Rwy 18-36	REIL Rwy's 18 and 36



CATEGORY	A	B	C	D
LPV DA	1747-3/4	250 (300-3/4)		NA
LNAV/ VNAV DA	1983-1 5/8	486 (500-1 5/8)		NA
LNAV MDA	2020-1	523 (600-1)	2020-1 1/2 523 (600-1 1/2)	NA
CIRCLING	2120-1	622 (700-1)	2120-1 3/4 622 (700-1 3/4)	NA

NC-2, 15 MAY 2025 to 12 JUN 2025

NC-2, 15 MAY 2025 to 12 JUN 2025