

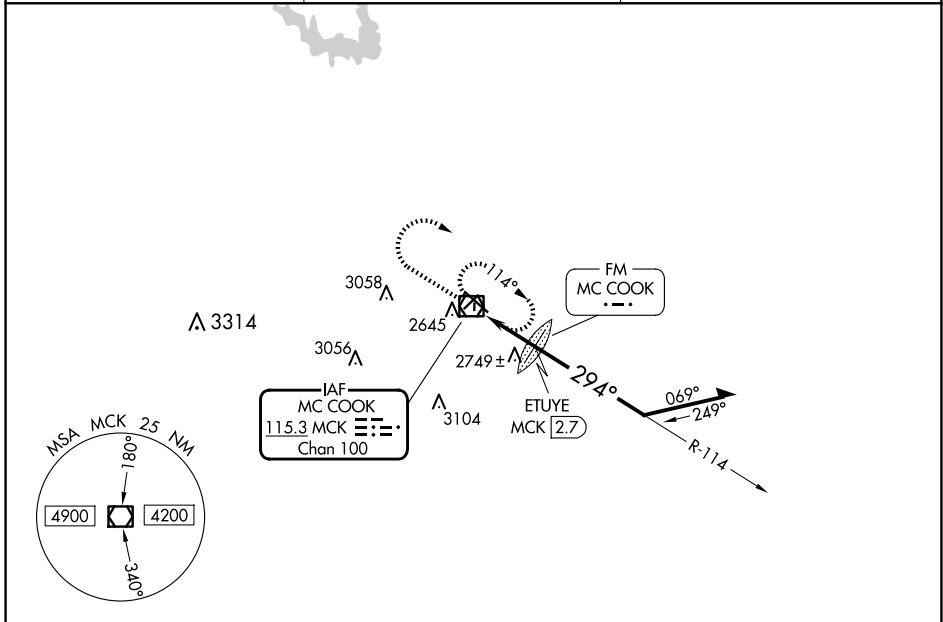
VOR/DME MCK <b>115.3</b> Chan <b>100</b>	APP CRS <b>294°</b>	Rwy Idg TDZE Apt Elev	<b>5698</b> <b>2558</b> <b>2583</b>
--	------------------------	-----------------------------	---

**VOR RWY 30**  
MC COOK BEN NELSON RGNL (MCK)

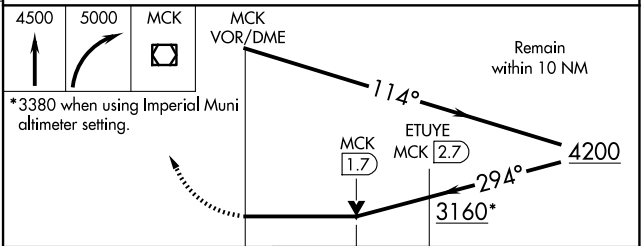
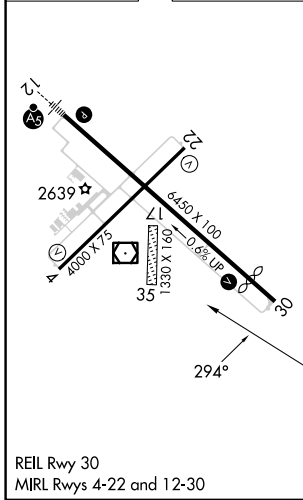
**⚠** VDP NA when using Imperial Muni altimeter setting. When local altimeter setting not received, use Imperial Muni altimeter setting; increase all MDAs 220 feet and visibility Cat B ¼ mile and Cat C ¾ mile. Circling NA to Rwsy 17 and 35.

**MISSED APPROACH:** Climb to 4500 then climbing right turn to 5000 direct MCK VOR/DME and hold.

ASOS <b>119.025</b>	DENVER CENTER <b>132.7 226.675</b>	UNICOM <b>122.8 (CTAF) 0</b>
------------------------	---------------------------------------	---------------------------------



ELEV 2583	<b>D</b>	TDZE 2558
-----------	----------	-----------



CATEGORY	A	B	C	D
S-30	3160-1	602 (600-1)	3160-1¾ 602 (600-1¾)	NA
CIRCLING	3160-1	577 (600-1)	3360-2¼ 777 (800-2¼)	NA
<b>ETUYE FIX MINIMUMS (DME or FM REQUIRED)</b>				
S-30	3000-1	442 (500-1)	3000-1¾ 442 (500-1¾)	NA
CIRCLING	3040-1 457 (500-1)	3120-1 537 (600-1)	3360-2¼ 777 (800-2¼)	NA

NC-2, 15 MAY 2025 to 12 JUN 2025

NC-2, 15 MAY 2025 to 12 JUN 2025