

WAAS CH <b>78335</b> <b>W14A</b>	APP CRS <b>143°</b>	Rwy Idg <b>4400</b> TDZE <b>1798</b> Apt Elev <b>1800</b>
--	------------------------	---

# RNAV (GPS) RWY 14

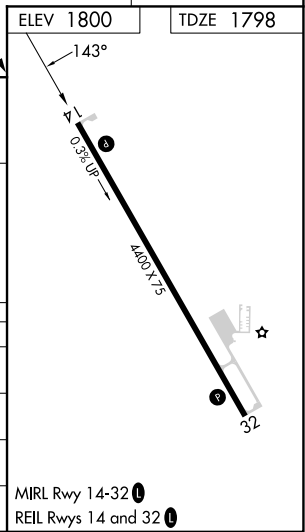
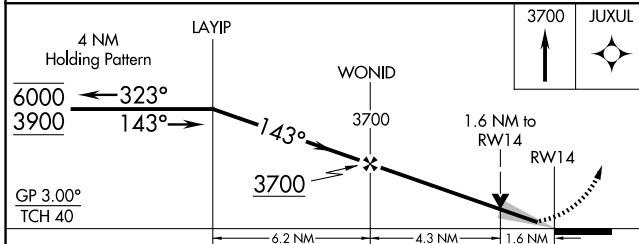
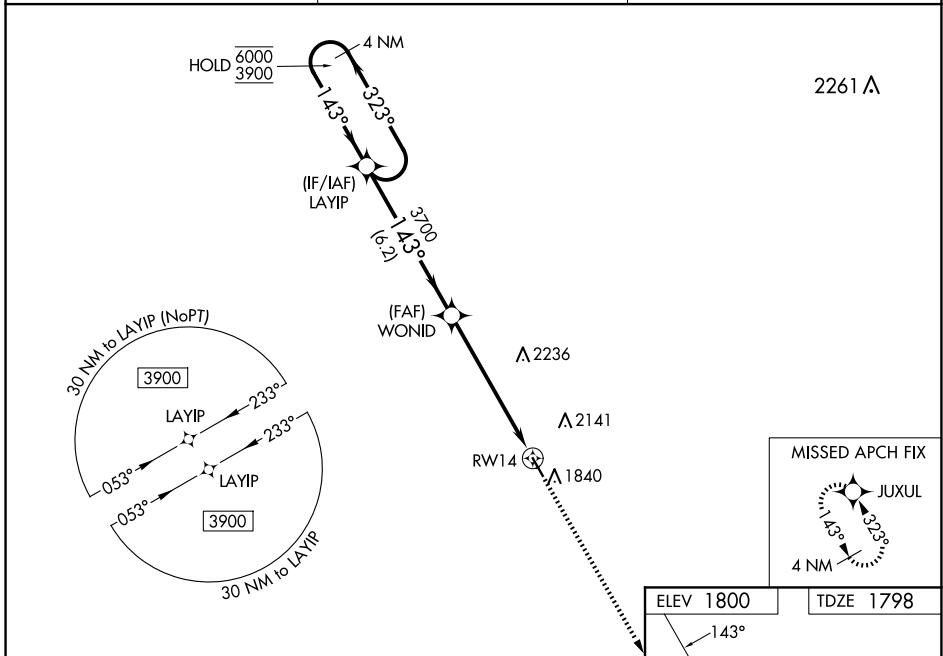
SMITH CENTER MUNI (K82)

RNP APCH - GPS.

**⚠** For uncompensated Baro-VNAV systems, LNAV/VNAV NA below -18°C or above 54°C. Baro-VNAV and VDP NA when using CNK altimeter setting. When local altimeter setting not received, use CNK altimeter setting: increase LPV DA to 2172 feet; increase LNAV/VNAV DA to 2250 and all visibilities  $\frac{3}{8}$  SM; increase all MDAs 180 feet and Circling all Cats visibility  $\frac{1}{2}$  SM.

MISSED APPROACH: Climb to 3700 direct JUXUL and hold.

AWOS-3PT <b>118.45</b>	MINNEAPOLIS CENTER <b>119.4 278.8</b>	UNICOM <b>122.8 (CTAF) 0</b>
---------------------------	--	---------------------------------



CATEGORY	A	B	C	D
LPV DA	1998-1	200 (200-1)		NA
LNAV/VNAV DA	2076-1	278 (300-1)		NA
LNAV MDA	2320-1	522 (600-1)		NA
<b>C</b> CIRCLING	2480-1 680 (700-1)	2580-1 780 (800-1)		NA

NC-2, 15 MAY 2025 to 12 JUN 2025

NC-2, 15 MAY 2025 to 12 JUN 2025