

WAAS CH 49134 W03A	APP CRS 035°	Rwy Idg 3398 TDZE 941 Apt Elev 943
--	------------------------	---

RNAV (GPS) RWY 3

MIAMI COUNTY (K81)

RNP APCH - GPS.

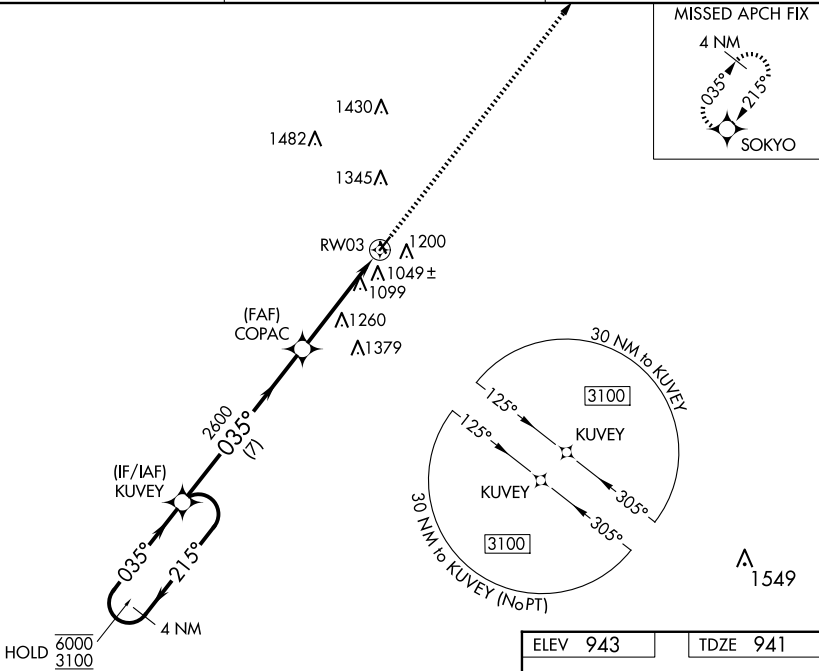
NA Baro-VNAV NA. Use New Century Aircenter altimeter setting; when not received, use Johnson County Exec altimeter setting and increase all DA 8 feet and all MDA 20 feet. Rwy 3 helicopter visibility reduction below 3/4 SM NA. Circling NA to Rwys 15 and 33.

MISSED APPROACH: Climb to 3100 direct SOKYO and hold.

IXD ASOS
135.325

KANSAS CITY APP CON
118.9 251.075

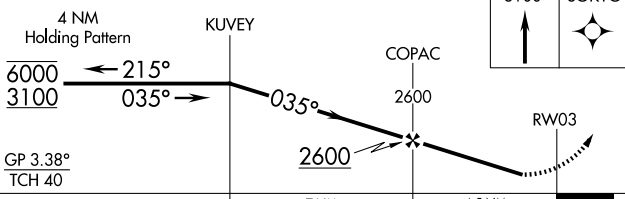
UNICOM
122.8 (CTAF) 0



NC-2, 15 MAY 2025 to 12 JUN 2025

NC-2, 15 MAY 2025 to 12 JUN 2025

ELEV 943	TDZE 941
----------	----------



CATEGORY	A	B	C	D
LPV DA	1284-1	343 (400-1)		NA
LNNAV/VNAV DA	1274-1	333 (400-1)		NA
LNNAV MDA	1640-1	699 (700-1)		NA
C CIRCLING	1640-1	697 (700-1)		NA

