

LOC/DME HXD <b>110.9</b> Chan 46	APP CRS <b>356°</b>	Rwy Idg TDZE Apt Elev	<b>7339</b> <b>1067</b> <b>1087</b>
--	------------------------	-----------------------------	---

# ILS or LOC RWY 36

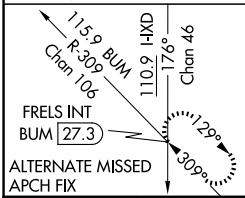
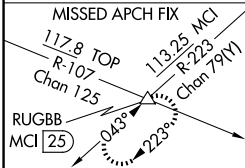
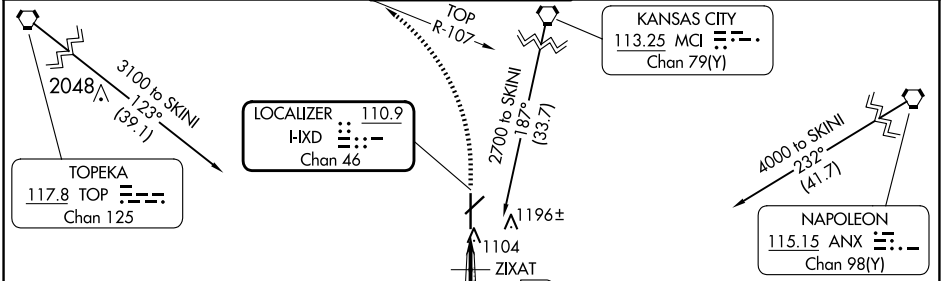
## NEW CENTURY AIRCENTER (IXD)

**DME required.**  
For inop ALS, increase S-LOC 36 Cat C/D visibility to 1 SM.

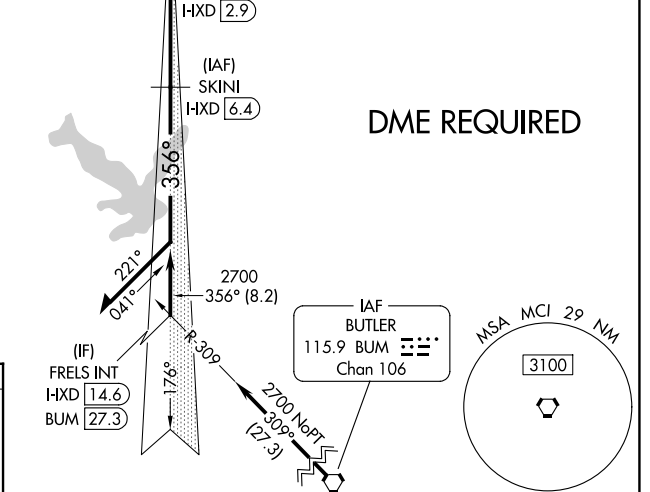
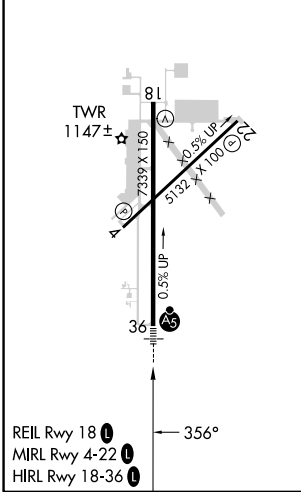
**MALSR**

**MISSED APPROACH:** Climb to 2700 then climbing left turn to 4000 on TOP VORTAC R-107 to RUGBB/MCI 25 DME and hold.

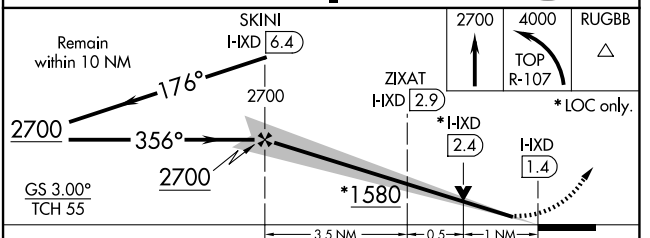
ASOS <b>135.325</b>	KANSAS CITY APP CON <b>118.9 251.075</b>	NEW CENTURY TOWER* <b>133.0 (CTAF) 0</b>	GND CON <b>124.3</b>	UNICOM <b>122.95</b>
------------------------	---	---	-------------------------	-------------------------



ELEV 1087	TDZE 1067
-----------	-----------



**DME REQUIRED**



CATEGORY	A	B	C	D
S-ILS 36	1267-1/2 200 (200-1/2)			
S-LOC 36	1420-1/2	353 (400-1/2)	1420-5/8	353 (400-5/8)
<b>C</b> CIRCLING	1560-1	473 (500-1)	1580-1/2 493 (500-1/2)	1640-2 553 (600-2)

NC-2, 15 MAY 2025 to 12 JUN 2025

NC-2, 15 MAY 2025 to 12 JUN 2025