

VORTAC HYS 110.4 Chan 41	APP CRS 332°	Rwy Idg TDZE Apt Elev	6501 1994 1999
---------------------------------------	------------------------	-----------------------------	---

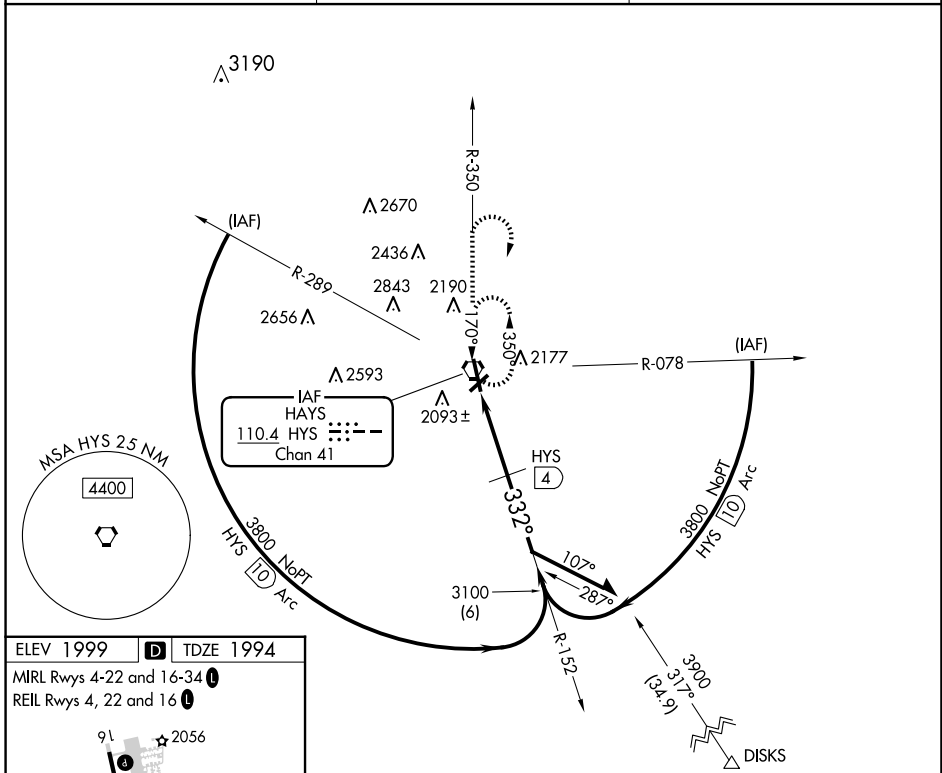
VOR/DME RWY 34

HAYS RGNL (HYS)

⚠ When local altimeter setting not received, use Russell altimeter setting: increase all MDA 80 feet and visibility S-34 Cat C and Circling Cat C and D ¼ SM. Circling NA for Cat D northwest of Rwy 4 and west of Rwy 16. VDP NA with Russell altimeter setting. For inop MALS, increase S-34 Cat D visibility to 1 ½ mile.

MALS MISSED APPROACH: Climb to 3800 via HYS R-350 then climbing right turn to 3900 direct HYS VORTAC and hold.

AWOS-3PT 125.525	KANSAS CITY CENTER 124.4 322.4	UNICOM 122.8 (CTAF) 0
----------------------------	--	---------------------------------

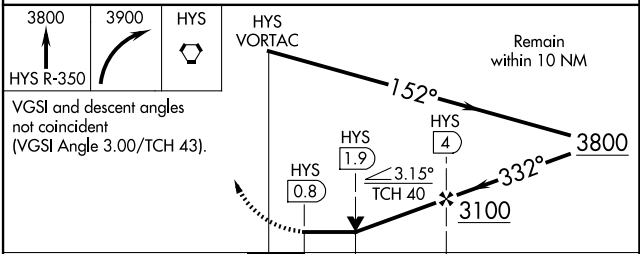
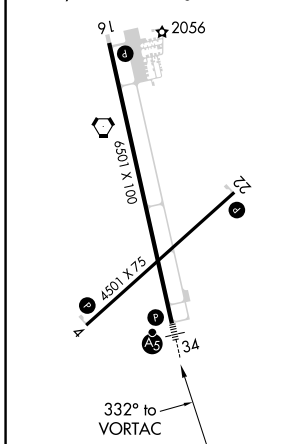


NC-2, 15 MAY 2025 to 12 JUN 2025

NC-2, 15 MAY 2025 to 12 JUN 2025

ELEV 1999	D	TDZE 1994
-----------	----------	-----------

MIRL Rws 4-22 and 16-34
REIL Rws 4, 22 and 16



CATEGORY	A	B	C	D
S-34	2380-1/2		386 (400-1/2)	2380-1 386 (400-1)
CIRCLING	2480-1	481 (500-1)	2560-1 1/2 561 (600-1 1/2)	2680-2 1/4 681 (700-2 1/4)