

| | | | |
|--|------------------------|-----------------------------|---|
| WAAS CH 50519 W22A | APP CRS 220° | Rwy Idg TDZE Apt Elev | 4500 1990 1999 |
|--|------------------------|-----------------------------|---|

RNAV (GPS) RWY 22

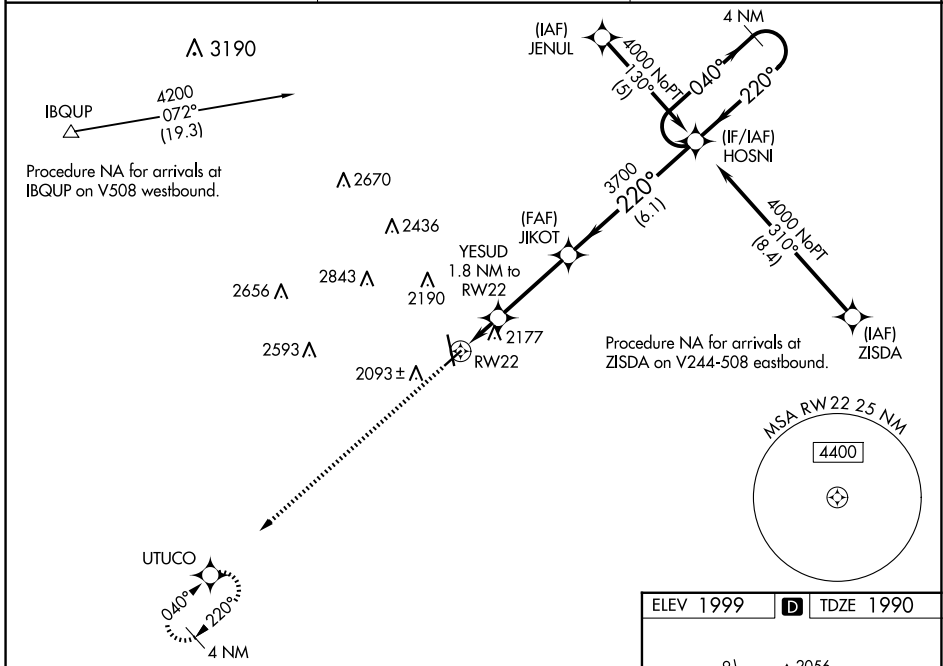
HAYS RGNL (HYS)

RNP APCH-GPS.

▼ For uncompensated Baro-VNAV systems, LNAV/VNAV NA below -18°C or above 45°C.
 ▲ Rwy 22 helicopter visibility reduction below ¼ SM NA. When local altimeter setting not received, use Russell altimeter setting: increase LPV DA to 2309 feet and visibility all Cats ¼ SM; increase LNAV/VNAV DA to 2545 feet and visibility all Cats ¼ SM; increase all MDA 80 feet and visibility LNAV and Circling Cat C and D ¼ SM. Circling NA for Cat D northwest of Rwy 4 and west of Rwy 16. VDP and Baro-VNAV NA when using Russell altimeter setting.

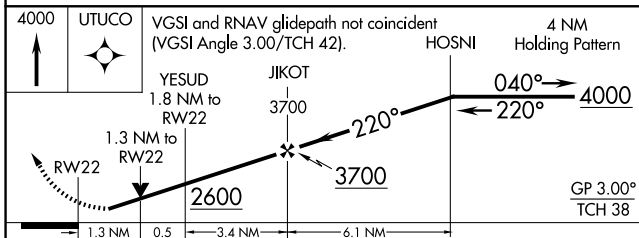
MISSED APPROACH:
Climb to 4000 direct UTUCO and hold.

| | | |
|----------------------------|--|---------------------------------|
| AWOS-3PT 125,525 | KANSAS CITY CENTER 124.4 322.4 | UNICOM 122.8 (CTAF) 1 |
|----------------------------|--|---------------------------------|

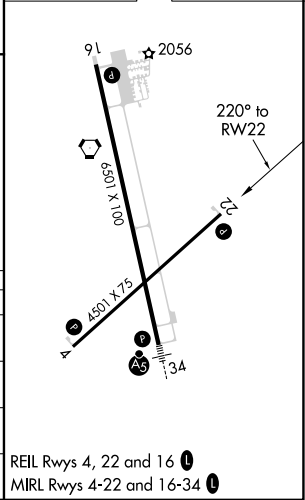


NC-2, 15 MAY 2025 to 12 JUN 2025

NC-2, 15 MAY 2025 to 12 JUN 2025



| | |
|-----------|--------------------|
| ELEV 1999 | D TDZE 1990 |
|-----------|--------------------|



| CATEGORY | A | B | C | D |
|--------------|----------------------|----------------------|----------------------|---|
| LPV DA | 2240-1 250 (300-1) | | | |
| LNAV/VNAV DA | 2476-1¾ 486 (500-1¾) | | | |
| LNAV MDA | 2440-1 450 (500-1) | 2440-1¼ 450 (500-1¼) | 2440-1½ 450 (500-1½) | |
| CIRCLING | 2480-1 481 (500-1) | 2560-1½ 561 (600-1½) | 2680-2¼ 681 (700-2¼) | |

REIL Rws 4, 22 and 16 1
MRL Rws 4-22 and 16-34 1