

WAAS CH <b>66023</b> <b>W04A</b>	APP CRS <b>040°</b>	Rwy Idg <b>4501</b> TDZE <b>1944</b> Apt Elev <b>1961</b>
--	------------------------	---

# RNAV (GPS) RWY 4

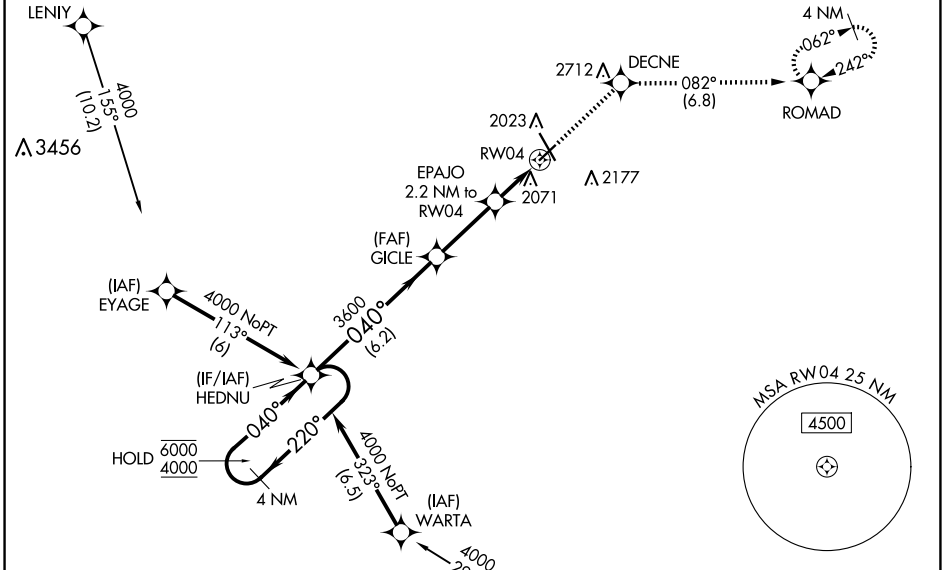
HASTINGS MUNI (HSI)

RNP APCH - GPS.

**⚠** Baro-VNAV and VDP NA when using GRI altimeter setting. For uncompensated Baro-VNAV systems, LNAV/VNAV NA below -24°C or above 54°C. When local altimeter setting not received, use GRI altimeter setting and increase LPV DA to 2262 feet and all visibilities  $\frac{1}{8}$  SM. Increase LNAV/VNAV DA to 2414 feet and all visibilities  $\frac{1}{4}$  SM. Increase all MDAs 80 feet and LNAV visibility Cat C  $\frac{1}{8}$  SM, and Circling visibility Cat C  $\frac{1}{4}$  SM.

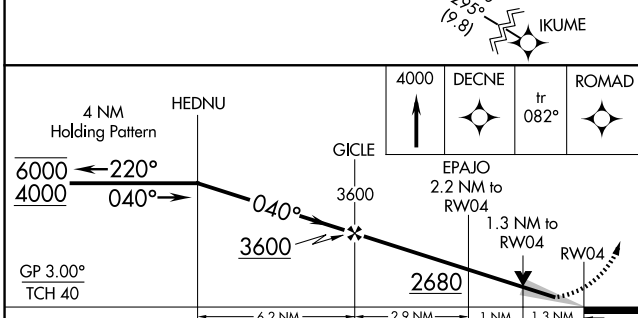
MISSED APPROACH: Climb to 4000 direct DECNE and on track 082° to ROMAD and hold.

ASOS <b>120.525</b>	MINNEAPOLIS CENTER <b>119.4 278.8</b>	UNICOM <b>122.8 (CTAF) 1</b>
------------------------	--	---------------------------------



NC-2, 07 AUG 2025 to 04 SEP 2025

NC-2, 07 AUG 2025 to 04 SEP 2025



ELEV 1961	<b>D</b> TDZE 1944
-----------	--------------------

CATEGORY	A	B	C	D
LPV DA	2194-1	250 (300-1)		NA
LNAV/VNAV DA	2346-1 $\frac{1}{8}$	402 (400-1 $\frac{1}{8}$ )		NA
LNAV MDA	2380-1	436 (500-1)	2380-1 $\frac{1}{4}$ 436 (500-1 $\frac{1}{2}$ )	NA
CIRCLING	2380-1 419 (500-1)	2540-1 579 (600-1)	2540-1 $\frac{1}{2}$ 579 (600-1 $\frac{1}{2}$ )	NA

