

WAAS CH 86603 W20A	APP CRS 200°	Rwy Idg 5000
		TDZE 3132
		Apt Elev 3134

RNAV (GPS) RWY 20

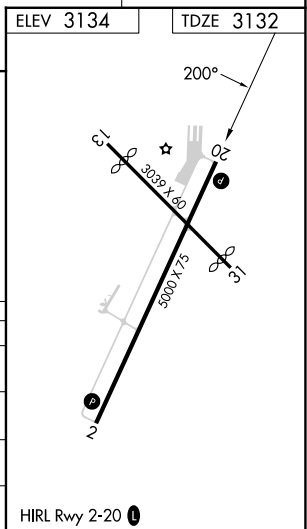
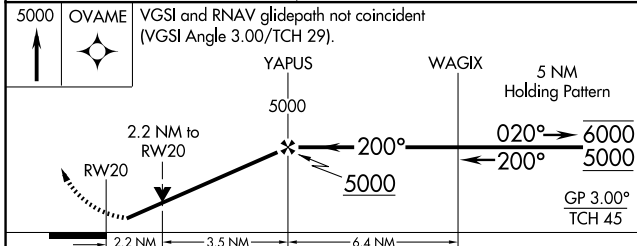
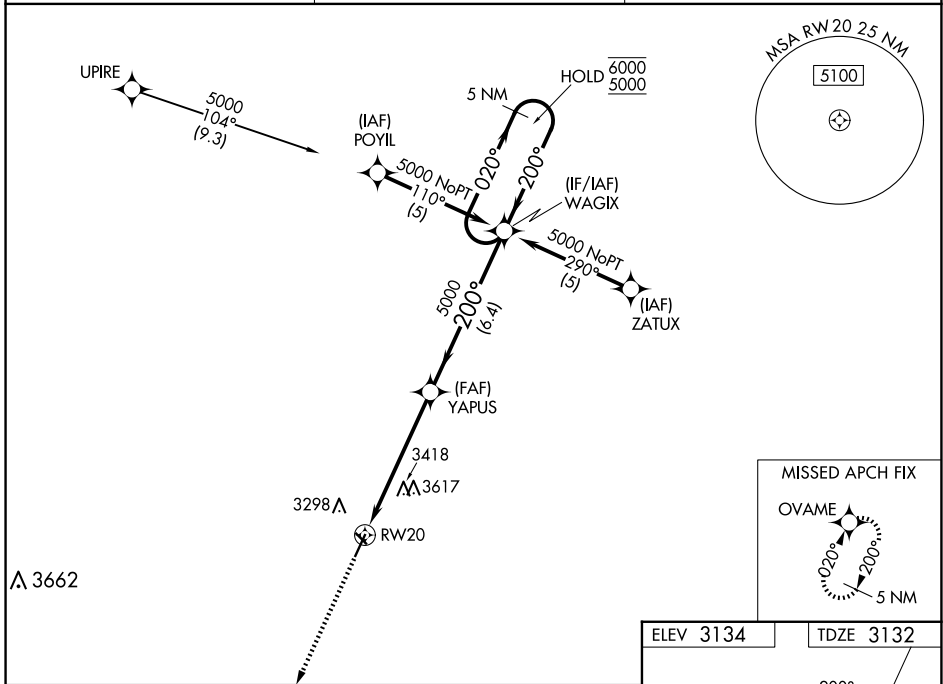
HUGOTON MUNI (HQQ)

RNP APCH-GPS.

⚠ Circling Rwy 13, 31 NA at night. Rwy 20 helicopter visibility reduction below 3/4 SM NA. For uncompensated Baro-VNAV systems, procedure NA below -21°C or above 54°C.

MISSED APPROACH: Climb to 5000 direct OVAME and hold.

AWOS-3PT 118.6	KANSAS CITY CENTER 134.0 257.625	UNICOM 122.8 (CTAF) 0
--------------------------	--	---------------------------------



CATEGORY	A	B	C	D
LPV DA	3382-1	250 (300-1)		NA
LNAV/VNAV DA	3580-1 3/8	448 (500-1 3/8)		NA
LNAV MDA	3860-1 728 (800-1)		3860-2 728 (800-2)	NA
C CIRCLING	3860-1 726 (800-1)		3980-2 1/2 846 (900-2 1/2)	NA

NC-2, 15 MAY 2025 to 12 JUN 2025

NC-2, 15 MAY 2025 to 12 JUN 2025