

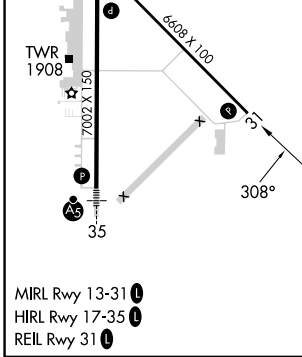
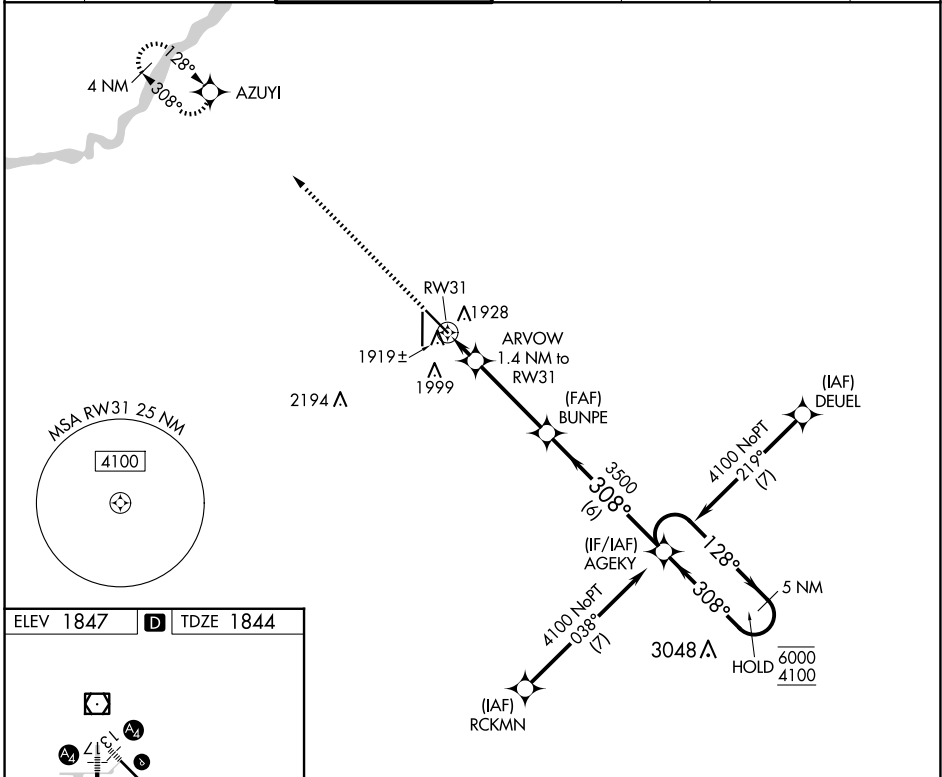
APP CRS	Rwy Idg	<b>6608</b>
<b>308°</b>	TDZE	<b>1844</b>
	Apt Elev	<b>1847</b>

# RNAV (GPS) RWY 31

CENTRAL NEBRASKA RGNL (GRI)

RNP APCH - GPS.		<p><b>V</b> VDP NA when using Aurora altimeter setting. When local altimeter setting not received, use Aurora altimeter setting and increase all MDA 60 feet; increase LNAV Cats C/D visibility 1/8 SM and Circling Cats C/D visibility 1/4 SM.</p>		<p>MISSED APPROACH: Climb to 4000 direct AZUYI and hold.</p>	
-----------------	--	---	--	--	--

ATIS	MINNEAPOLIS CENTER	GRAND ISLAND TOWER*	GND CON	CLNC DEL	CLNC DEL	UNICOM
<b>127.4</b>	<b>119.4 278.8</b>	<b>118.2 (CTAF) 0 259.3</b>	<b>121.9 259.3</b>	<b>121.9</b>	<b>126.05</b> (when twr closed)	<b>122.95</b>



4000	AZUYI	ARVOW 1.4 NM to RW31	BUNPE	AGEKY 5 NM Holding Pattern
		0.9 NM to RW31	3500	6000 4100
		0.5	3.6 NM	6 NM
CATEGORY	A	B	C	D
LNAV MDA	2180-1 336 (400-1)			
CIRCLING	2300-1	453 (500-1)	2400-1½ 553 (600-1½)	2560-2¼ 713 (800-2¼)

NC-2, 07 AUG 2025 to 04 SEP 2025

NC-2, 07 AUG 2025 to 04 SEP 2025