

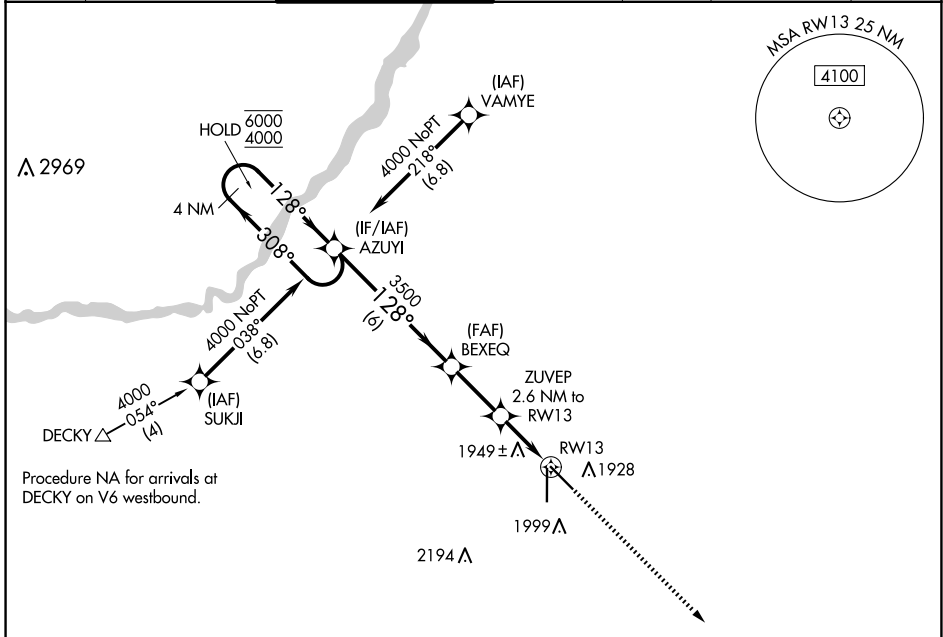
APP CRS	Rwy Idg	6608
128°	TDZE	1842
	Apt Elev	1847

RNAV (GPS) RWY 13

CENTRAL NEBRASKA RGNL (GRI)

RNP APCH - GPS.				MALS	MISSED APPROACH: Climb to 4100 direct AGEKY and hold.		

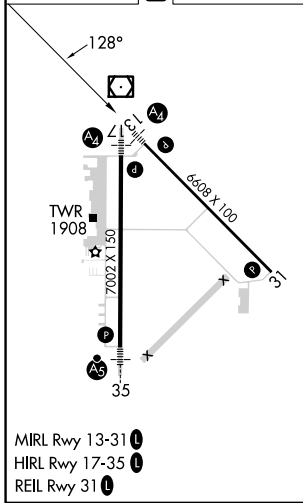
ATIS	MINNEAPOLIS CENTER	GRAND ISLAND TOWER *	GND CON	CLNC DEL	CLNC DEL	UNICOM
127.4	119.4 278.8	118.2 (CTAF) 0 259.3	121.9 259.3	121.9	126.05 (when twr closed)	122.95



NC-2, 07 AUG 2025 to 04 SEP 2025

NC-2, 07 AUG 2025 to 04 SEP 2025

ELEV 1847	D	TDZE 1842
-----------	----------	-----------



VGS1 and descent angles not coincident (VGS1 Angle 3.00/TCH 35).			
4 NM Holding Pattern	AZUYI	BEXEQ	ZUVEP 2.6 NM to RW13
6000 ← 308°	→ 128°	→ 128°	→ 300° TCH 45
4000		3500	2700
6 NM		2.5 NM	1.5 NM → 1 NM
CATEGORY	A	B	C
LNAV MDA	2200-3/4 358 (400-3/4)		
CIRCLING	2300-1 453 (500-1)	2400-1 1/2 553 (600-1 1/2)	2560-2 1/4 713 (800-2 1/4)