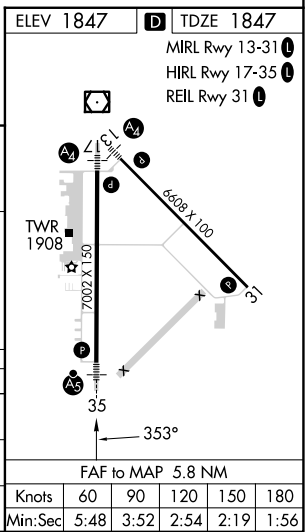
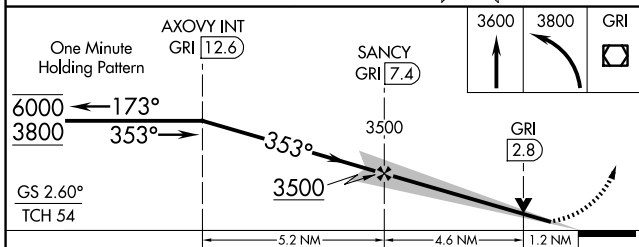
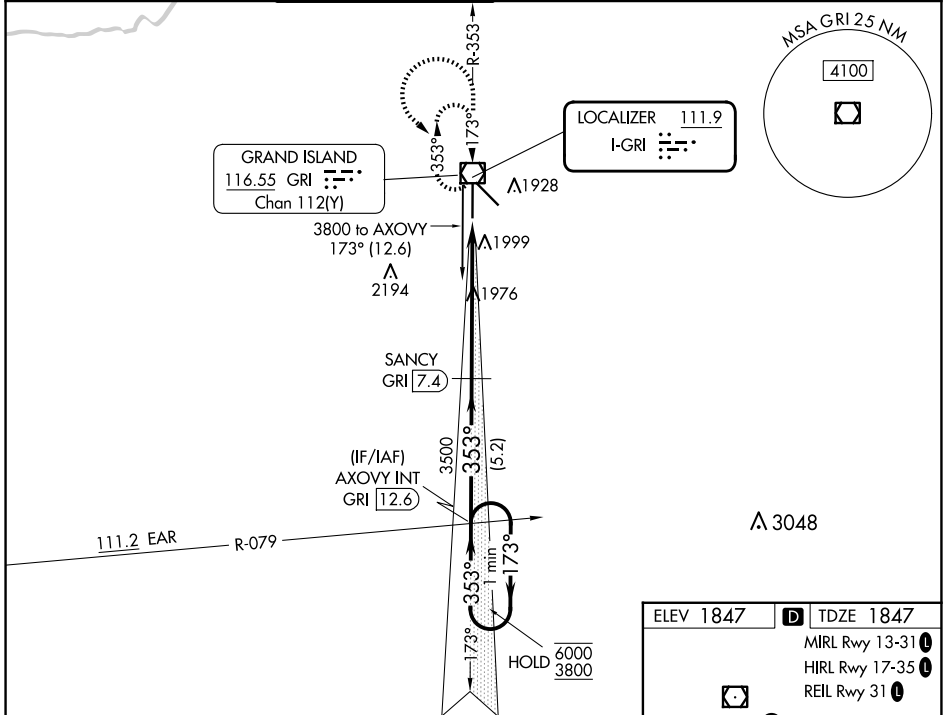


LOC I-GRI 111.9	APP CRS 353°	Rwy Idg TDZE Apt Elev	7002 1847 1847
---------------------------	------------------------	-----------------------------	---

ILS or LOC RWY 35

CENTRAL NEBRASKA RGNL (GRI)

DME required for LOC only.				MALSR 	MISSED APPROACH: Climb to 3600 then climbing left turn to 3800 direct GRI VOR/DME and hold, continue climb-in-hold to 3800.		
For inop ALS, increase S-LOC 35 Cat C/D visibility to RVR 6000. DME from GRI VOR/DME, DME use requires simultaneous reception of I-GRI and GRI DME. *RVR 1800 authorized with use of FD or AP or HUD to DA. (NA when using Aurora altimeter setting).							
ATIS 127.4	MINNEAPOLIS CENTER 119.4 278.8	GRAND ISLAND TOWER * 118.2 (CTAF) 259.3	GND CON 121.9 259.3	CLNC DEL 121.9	CLNC DEL 126.05 (when twr closed)	UNICOM 122.95	



CATEGORY	A	B	C	D
S-ILS 35*	2047/24 200 (200-½)			
S-LOC 35	2240/24 393 (400-½)	2240/35 393 (400-¾)		
CIRCLING	2300-1 453 (500-1)	2400-1½ 553 (600-1½)	2560-2¼ 713 (800-2¼)	

NC-2, 15 MAY 2025 to 12 JUN 2025

NC-2, 15 MAY 2025 to 12 JUN 2025