

VORTAC GCK 113.3 Chan 80	APP CRS 344°	Rwy Idg TDZE Apt Elev	7299 2885 2891
---------------------------------------	------------------------	-----------------------------	---

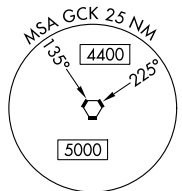
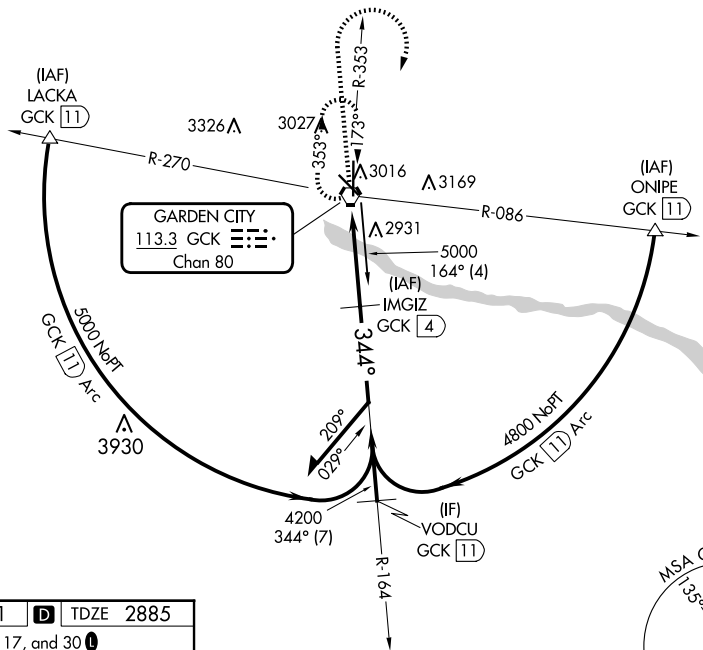
VOR RWY 35

GARDEN CITY RGNL (GCK)

DME required.		MALS R	MISSED APPROACH: Climb to 4000 then climbing right turn to 4800 direct GCK VORTAC and hold.	
<p>V For inop ALS, increase S-35 Cat C visibility to 3/8 SM. A Inop table does not apply to S-35 Cat D.</p>				
ASOS 121.325	KANSAS CITY CENTER 125.2 285.425	GARDEN CITY TOWER ★ 118.15 (CTAF) 0 254.4	GND CON 119.0 254.4	UNICOM 122.95

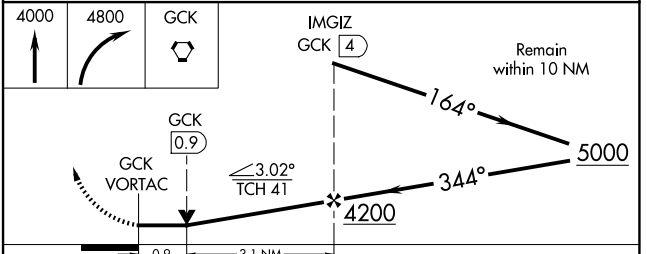
NC-2, 15 MAY 2025 to 12 JUN 2025

NC-2, 15 MAY 2025 to 12 JUN 2025



ELEV 2891 **D** TDZE 2885

REIL Rwy 12, 17, and 30 **L**
 MIRL Rwy 12-30 **L**
 HIRL Rwy 17-35 **L**



CATEGORY	A	B	C	D
S-35	3200-1/2 315 (400-1/2)		3200-3/4 315 (400-1)	3200-1 315 (400-1)
C CIRCLING	3320-1 429 (500-1)	3360-1 469 (500-1)	3480-1 589 (600-1 1/2)	3480-2 589 (600-2)