


WAAS CH 65710 W35A	APP CRS 352°	Rwy Idg TDZE 1883 Apt Elev 1887
--	------------------------	---

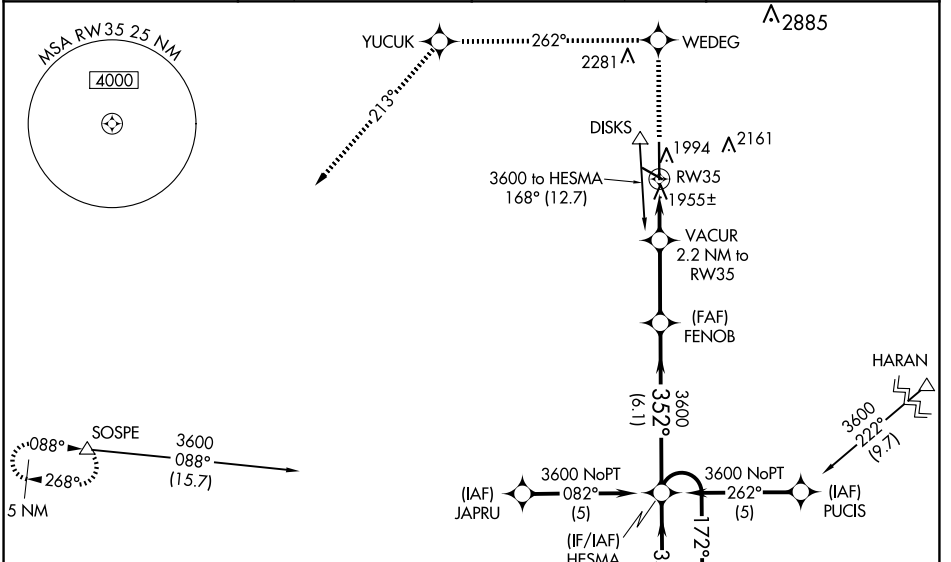
RNAV (GPS) RWY 35

GREAT BEND MUNI (G.B.D)

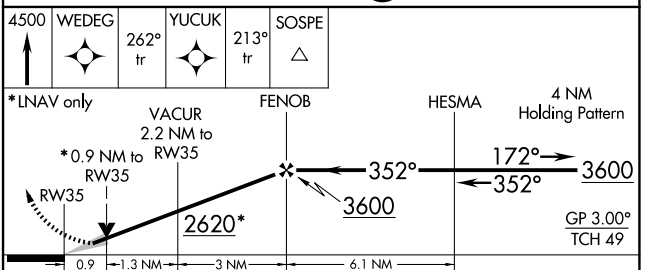
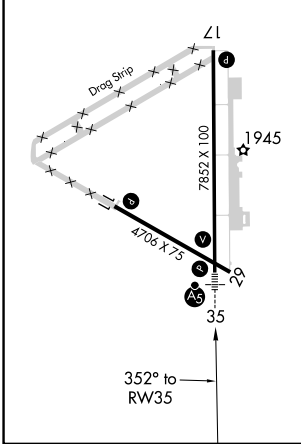
⚠ For uncompensated Baro-VNAV systems, LNAV/VNAV NA below -18°C (0°F) or above 54°C (130°F). DME/DME RNP-0.3 NA. When local altimeter setting not received, use Russell Muni altimeter setting: increase LPV DA to 2248 feet and all visibilities ¼ SM; increase LNAV/VNAV DA to 2299 feet and all visibilities ¼ SM; increase all MDAs 80 feet and visibility Cats C and D ¼ SM. For inop MALSAR increase LPV all Cats visibility to 1 mile. For inop MALSAR when using Russell Muni altimeter setting increase LPV all Cats and LNAV Cat D visibility to 1¼ mile. Baro-VNAV and VDP NA when using Russell Muni altimeter setting. Inop table does not apply to LNAV Cat D.

MALSAR

MISSED APPROACH: Climb to 4500 direct WEDEG and via 262° track to YUCUK then via 213° track to SOSPE and hold.

AWOS-3PT 119.275	KANSAS CITY CENTER 118.8 322.425	UNICOM 122.8 (CTAF) 0
----------------------------	--	---------------------------------



ELEV 1887	D	TDZE 1883
MIRL Rwy 11-29 and 17-35		
REIL Rwy 17		



CATEGORY	A	B	C	D
LPV DA		2171-½	288 (300-½)	
LNAV/VNAV DA		2222-¾	339 (400-¾)	
LNAV MDA		2220-½	337 (400-½)	2220-1 337 (400-1)
CIRCLING	2320-1 433 (500-1)	2340-1 453 (500-1)	2520-1¾ 633 (700-1¾)	2640-2½ 753 (800-2½)

NC-2, 15 MAY 2025 to 12 JUN 2025

NC-2, 15 MAY 2025 to 12 JUN 2025