

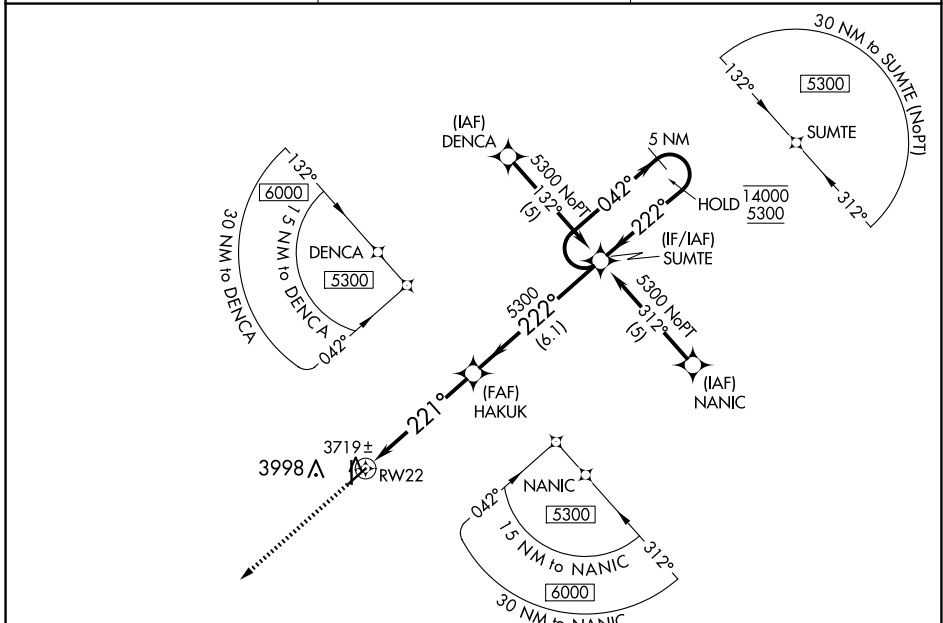
APP CRS 221°	Rwy Idg TDZE Apt Elev	4900 3615 3622
------------------------	-----------------------------	---

RNAV (GPS) RWY 22

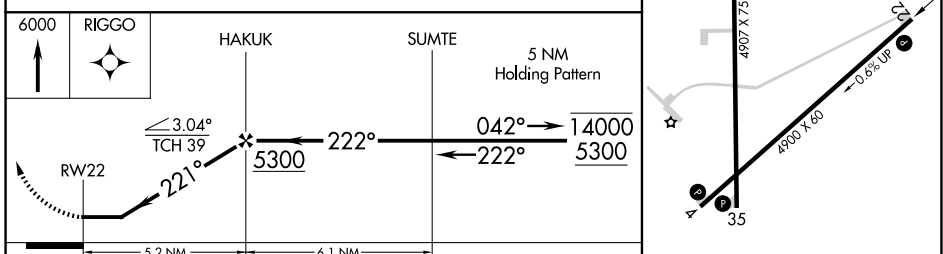
ELKHART-MORTON COUNTY (EHA)

RNP APCH-GPS.	MISSED APPROACH: Climb to 6000 direct RIGGO and hold.
<p>Rwy 22 helicopter visibility reduction below 3/4 SM NA.</p>	

AWOS-3P 118.025	KANSAS CITY CENTER 134.0 257.625	UNICOM 122.8 (CTAF) 0
---------------------------	--	---------------------------------



ELEV 3622	TDZE 3615
-----------	-----------



CATEGORY	A	B	C	D
LNAV MDA	4100-1	485 (500-1)	4100-1 3/8 485 (500-1 3/8)	NA

NC-2, 15 MAY 2025 to 12 JUN 2025

NC-2, 15 MAY 2025 to 12 JUN 2025

MIRL Rwy 17-35 and 4-22 0