

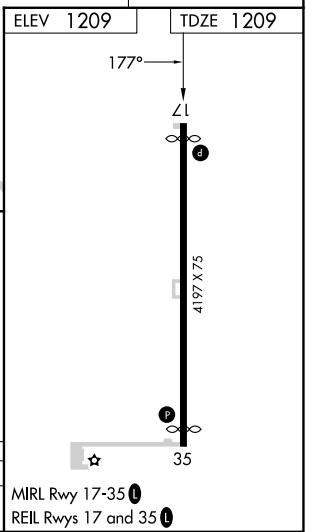
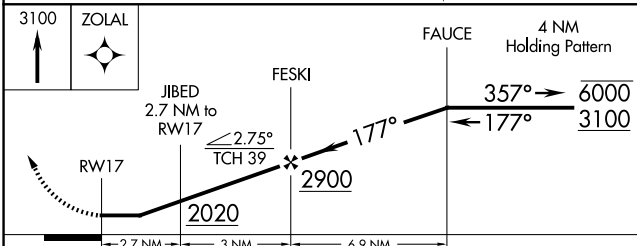
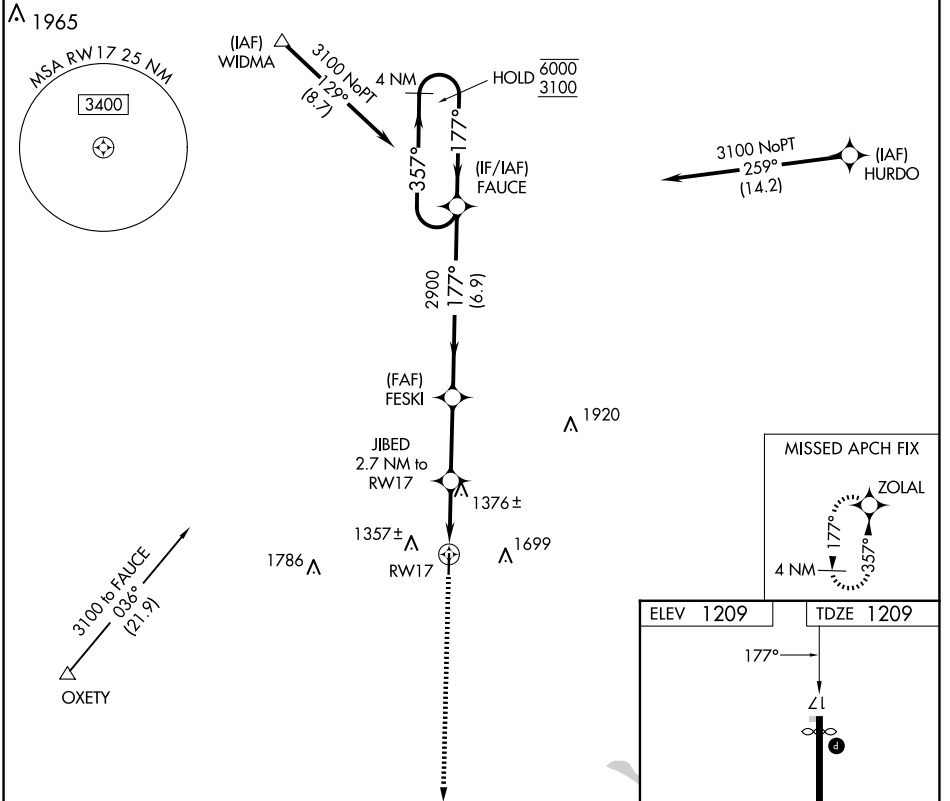
APP CRS <b>177°</b>	Rwy Idg <b>3995</b>
	TDZE <b>1209</b>
	Apt Elev <b>1209</b>

# RNAV (GPS) RWY 17

CLAY CENTER MUNI (CYW)

RNP APCH.		MISSED APPROACH: Climb to 3100 direct ZOLAL and hold.
▼	Procedure NA at night. Rwy 17 helicopter visibility reduction below 1 SM NA.	
▲	NA	When local altimeter setting not received, use Salina altimeter setting and increase all MDA 120 feet and LNAV Cat C visibility 3/8 SM.

AWOS-3T <b>119.95</b>	MARSHALL AAF GCA* <b>121.25 269.05</b>	UNICOM <b>122.8 (CTAF) 0</b>
--------------------------	---	---------------------------------



CATEGORY	A	B	C	D
LNAV MDA	1640-1	431 (500-1)	1640-1¼ 431 (500-1¼)	NA

MIRL Rwy 17-35 0  
REIL Rws 17 and 35 0

NC-2, 07 AUG 2025 to 04 SEP 2025

NC-2, 07 AUG 2025 to 04 SEP 2025