

VOR BIE 110.6	APP CRS 176°	Rwy Idg TDZE Apt Elev	5602 1324 1324
-------------------------	------------------------	-----------------------------	-------------------------------------------

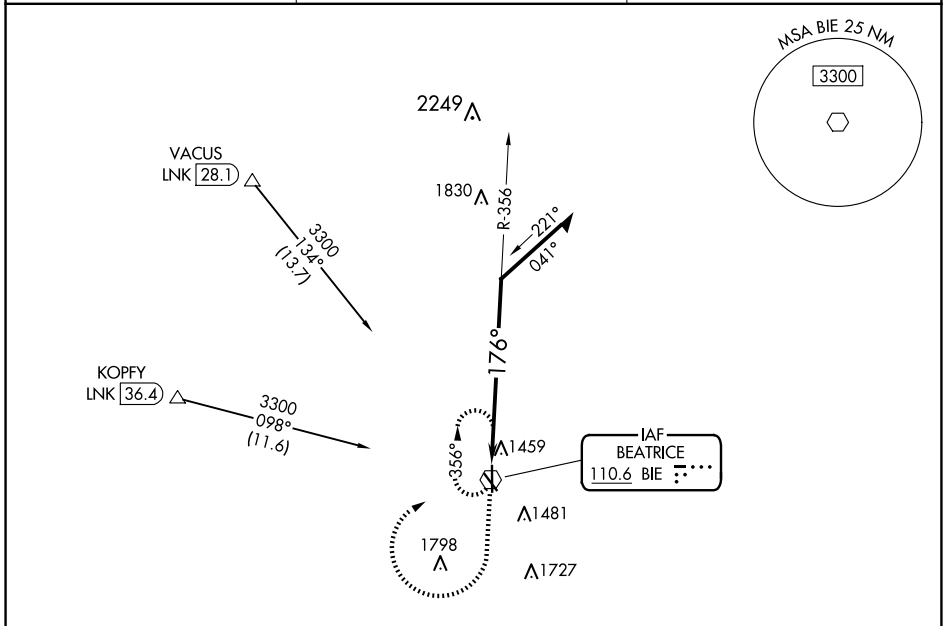
VOR RWY 18
BEATRICE MUNI (BIE)

DME required for procedure entry.

▽ Rwy 18 helicopter visibility reduction below 3/4 SM NA.

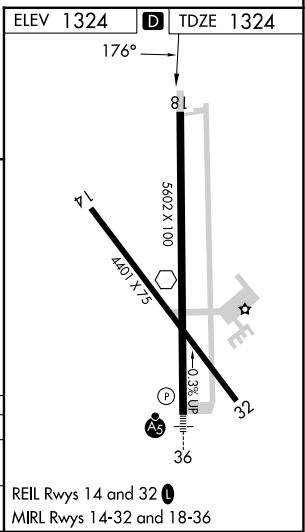
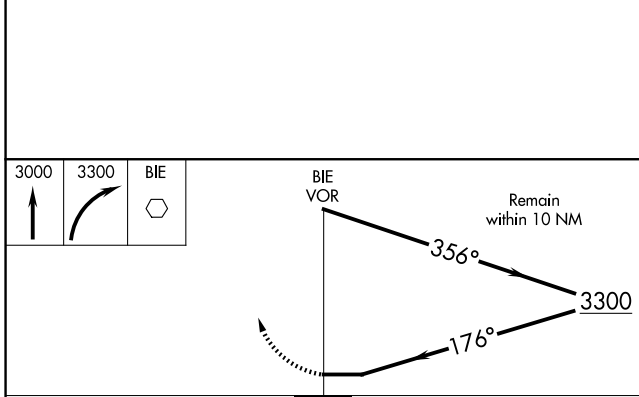
MISSED APPROACH: Climb to 3000 then climbing right turn to 3300 direct BIE VOR and hold.

AWOS-3 125.325	MINNEAPOLIS CENTER 126.4 317.7	UNICOM 122.8 (CTAF)
--------------------------	------------------------------------------	-------------------------------



NC-2, 15 MAY 2025 to 12 JUN 2025

NC-2, 15 MAY 2025 to 12 JUN 2025



CATEGORY	A	B	C	D
S-18	2180-1 856 (900-1)	2180-1 1/4 856 (900-1 1/4)	2180-2 1/2	856 (900-2 1/2)
C CIRCLING	2180-1 1/4	856 (900-1 1/4)	2180-2 1/2 856 (900-2 1/2)	2180-2 3/4 856 (900-2 3/4)