

WAAS CH <b>45931</b> <b>W19A</b>	APP CRS <b>188°</b>	Rwy Idg TDZE <b>1409</b> Apt Elev <b>1409</b>	<b>8001</b>
--	------------------------	---	-------------

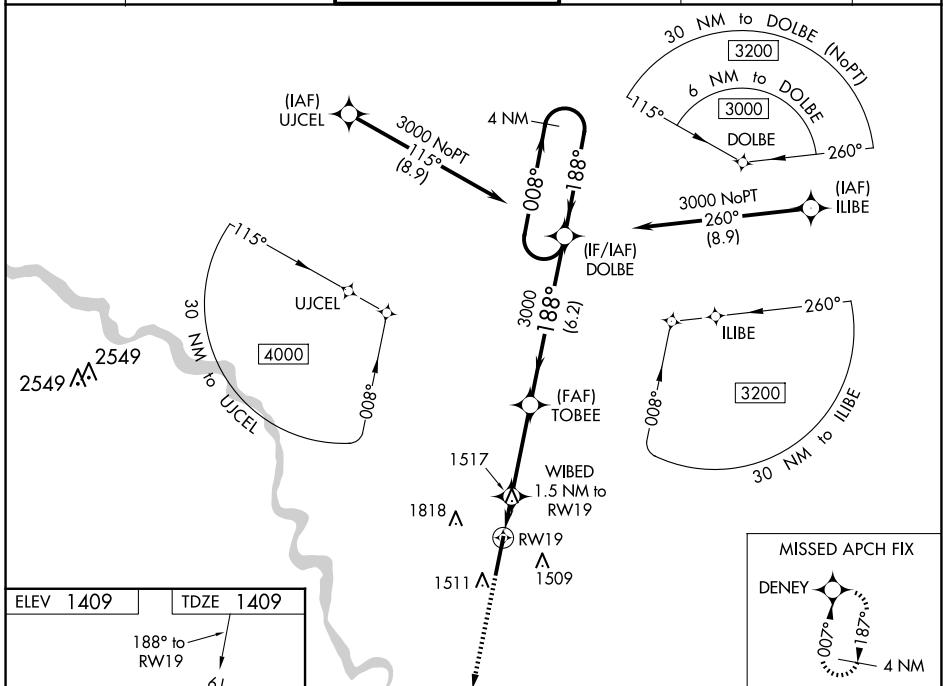
# RNAV (GPS) RWY 19

BEECH FACTORY (B.E.C)

**NA** For uncompensated Baro-VNAV systems, LNAV/VNAV NA below -17°C (2°F) or above 54°C (130°F). DME/DME RNP-0.3 NA. Obtain local altimeter setting on CTAF; when not received, use Wichita Dwight D Eisenhower NH altimeter setting and increase all DA 36 feet and all MDA 40 feet; increase LPV all Cats and LNAV/VNAV all Cats visibility and LNAV Cat C and D visibility 1/8 mile and Circling Cat C and D visibility 1/4 mile. Baro-VNAV NA with Wichita Dwight D Eisenhower NH altimeter setting. Helicopter visibility reduction below 3/4 SM NA.

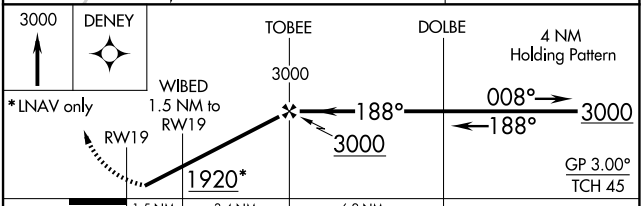
**MISSED APPROACH:** Climb to 3000 direct DENEY and hold.

AWOS-3PT <b>119.45</b>	WICHITA APP CON <b>134.8 269.1</b>	BEECH TOWER ★ <b>126.8 (CTAF) 0 313.6</b>	GND CON <b>121.7</b>	CLNC DEL <b>125.0</b> (When tower closed)	UNICOM <b>122.95</b>
---------------------------	---------------------------------------	--	-------------------------	---	-------------------------



ELEV <b>1409</b>	TDZE <b>1409</b>
------------------	------------------

The inset diagram shows the runway layout with the tower (TWR 1437) and the runway (RWY 19) oriented at 188°. A 61-foot wide area is marked along the runway, and a 0.5% UP slope is indicated.



CATEGORY	A	B	C	D
LPV DA		1659-3/4	250 (300-3/4)	
LNAV/VNAV DA		1659-3/4	250 (300-3/4)	
LNAV MDA		1780-1	371 (400-1)	
<b>CIRCLING</b>	1820-1 411 (500-1)	2120-1 711 (800-1)	2120-2 711 (800-2)	2120-2 1/4 711 (800-2 1/4)

NC-2, 15 MAY 2025 to 12 JUN 2025

NC-2, 15 MAY 2025 to 12 JUN 2025