

WAAS CH 72609 W14A	APP CRS 141°	Rwy Idg TDZE Apt Elev	4203 2546 2546
--	------------------------	-----------------------------	---

RNAV (GPS) RWY 14

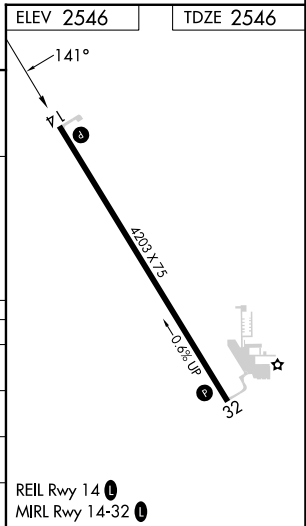
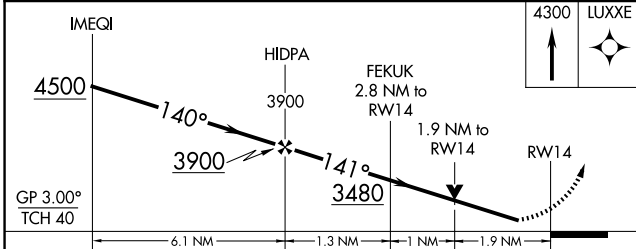
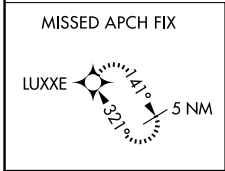
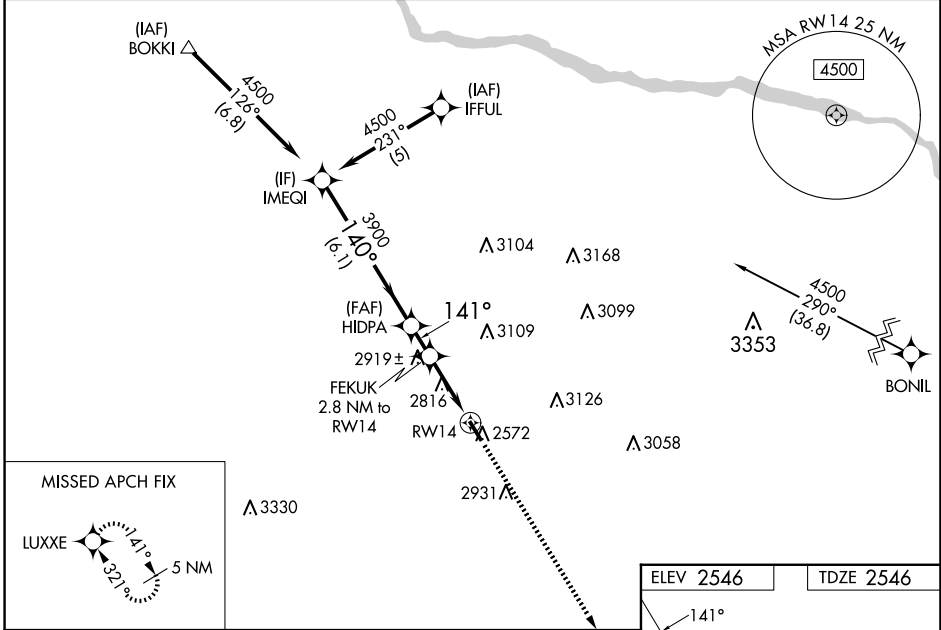
BROKEN BOW MUNI/KEITH GLAZE FLD (BBW)

RNP APCH - GPS.

⚠ For uncompensated Baro-VNAV systems, LNAV/VNAV NA below -7°C or above 54°C. When local altimeter setting not received, use LBF altimeter setting: increase LPV DA to 2947 feet and all visibilities 1/8 SM; increase LNAV/VNAV DA to 3337 feet and all visibilities 5/8 SM; increase all MDAs 160 feet and LNAV visibility Cat B 1/4 SM, and Circling visibility Cat B 1/4 SM. Baro/VNAV and VDP NA when using LBF altimeter setting. Rwy 14 helicopter visibility reduction below 1/4 SM NA.

MISSED APPROACH: Climb to 4300 direct LUXXE and hold.

ASOS 120.0	DENVER CENTER 132.7 226.675	UNICOM 122.8 (CTAF) 0
----------------------	---------------------------------------	---------------------------------



CATEGORY	A	B	C	D
LPV DA	2801-1	255 (300-1)		NA
LNAV/VNAV DA	3191-1 7/8	645 (700-1 7/8)		NA
LNAV MDA	3180-1	634 (700-1)		NA
CIRCLING	3180-1	634 (700-1)		NA

NC-2, 15 MAY 2025 to 12 JUN 2025

NC-2, 15 MAY 2025 to 12 JUN 2025