

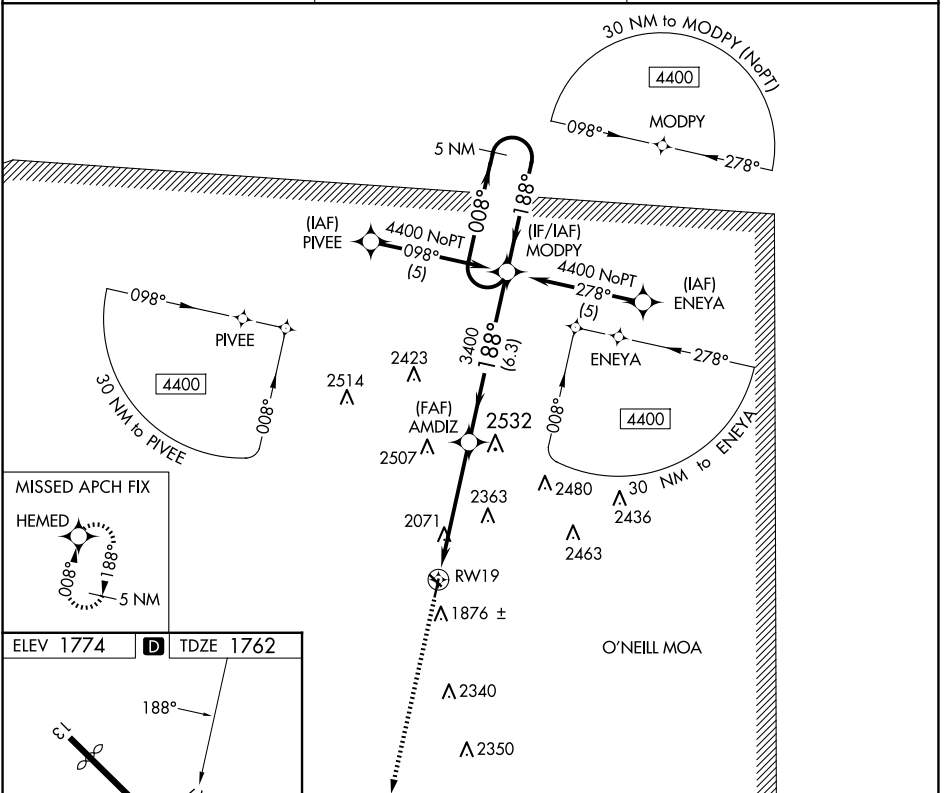
APP CRS <b>188°</b>	Rwy Idg <b>3700</b>
	TDZE <b>1762</b>
	Apt Elev <b>1774</b>

# RNAV (GPS) RWY 19

ANTELOPE COUNTY (4V9)

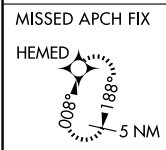
RNP APCH - GPS.	MISSED APPROACH: Climb to 4400 direct HEMED and hold.
<p>▼ Visibility reduction by helicopters NA. Use Albion altimeter setting, when not received, use Norfolk altimeter setting and increase all MDA 40 feet.</p> <p>▲ NA</p>	

AWOS-3PT <b>119.275</b>	MINNEAPOLIS CENTER <b>128.0 257.95</b>	UNICOM <b>122.8 (CTAF) 0</b>
----------------------------	---	---------------------------------

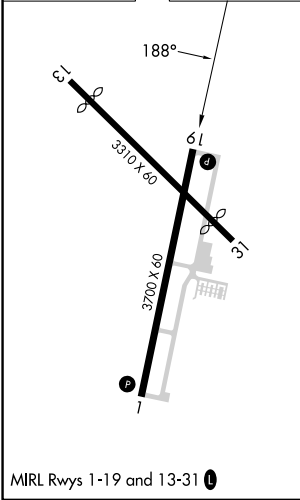


NC-2, 15 MAY 2025 to 12 JUN 2025

NC-2, 15 MAY 2025 to 12 JUN 2025



ELEV 1774	<b>D</b>	TDZE 1762
-----------	----------	-----------



MIRL Rwys 1-19 and 13-31 0

NELIGH, NEBRASKA  
Orig-B 08SEP22

4400	HEMED	Visual Segment - Obstacles.		
CATEGORY	A	B	C	D
LNAV MDA	2380-1	618 (700-1)	NA	
<b>C</b> CIRCLING	2380-1 606 (700-1)	2440-1 666 (700-1)	NA	