

WAAS CH <b>86839</b> <b>W35A</b>	APP CRS <b>350°</b>	Rwy Idg TDZE Apt Elev <b>4500</b> <b>2082</b> <b>2086</b>
--	------------------------	--

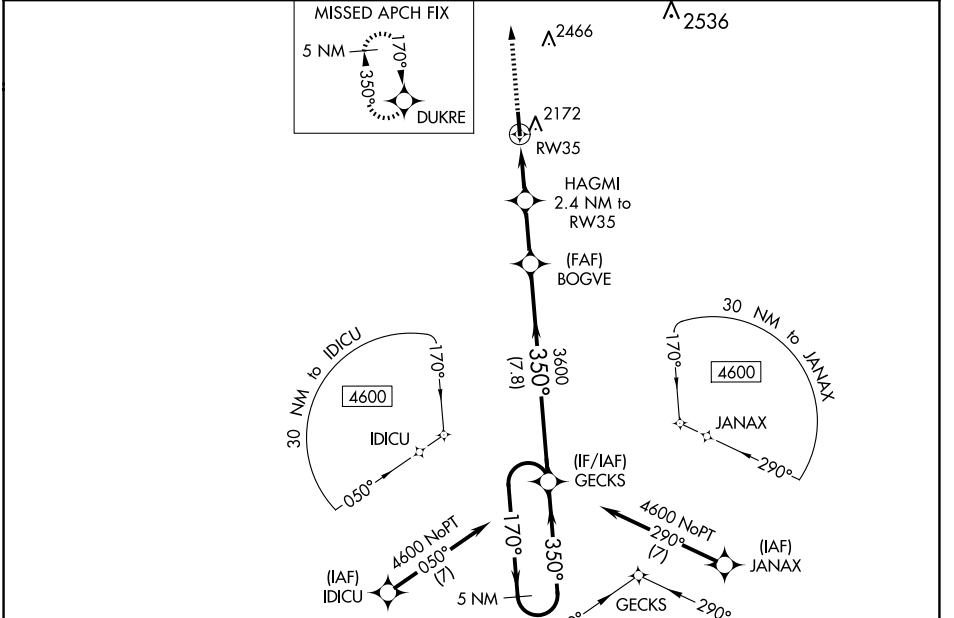
# RNAV (GPS) RWY 35

COMANCHE COUNTY (3K8)

**Baro-VNAV NA** when using Pratt altimeter setting. DME/DME RNP-0.3 NA. Rwy 35 Helicopter visibility reduction below 3/4 SM NA. When local altimeter setting not received, use Pratt altimeter setting and increase LPV DA to 2554 and LNAV/VNAV DA to 2572 and all MDA 120 feet; increase LPV all Cats visibility 1/8 SM, LNAV/VNAV all Cats visibility 1/8 SM, LNAV Cat C visibility 1/4 SM, and increase Circling Cat C visibility 1/2 SM.

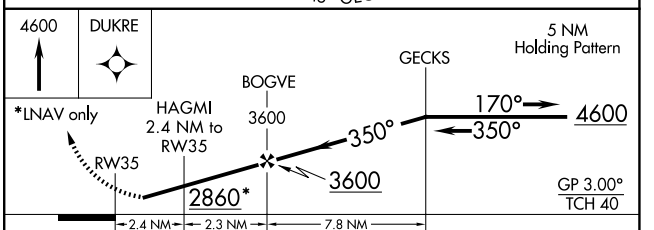
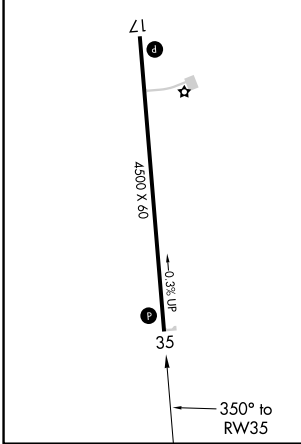
**MISSED APPROACH:** Climb to 4600 direct DUKRE and hold.

AWOS-3PT <b>118.05</b>	KANSAS CITY CENTER <b>126.95 379.2</b>	CTAF <b>122.9</b>
---------------------------	---	----------------------



ELEV <b>2086</b>	TDZE <b>2082</b>
------------------	------------------

REIL Rws 17 and 35  
MIRL Rwy 17-35



CATEGORY	A	B	C	D
LPV DA	2443-1 1/4	361 (400-1 1/4)		NA
LNAV/VNAV DA	2461-1 1/4	379 (400-1 1/4)		NA
LNAV MDA	2540-1	458 (500-1)	2540-1 3/8 458 (500-1 3/8)	NA
<b>CIRCLING</b>	2620-1	534 (600-1)	2940-2 1/2 854 (900-2 1/2)	NA

NC-2, 15 MAY 2025 to 12 JUN 2025

NC-2, 15 MAY 2025 to 12 JUN 2025