

APP CRS	Rwy Ldg	<b>3498</b>
<b>355°</b>	TDZE	<b>1102</b>
	Apt Elev	<b>1102</b>

# RNAV (GPS) RWY 36

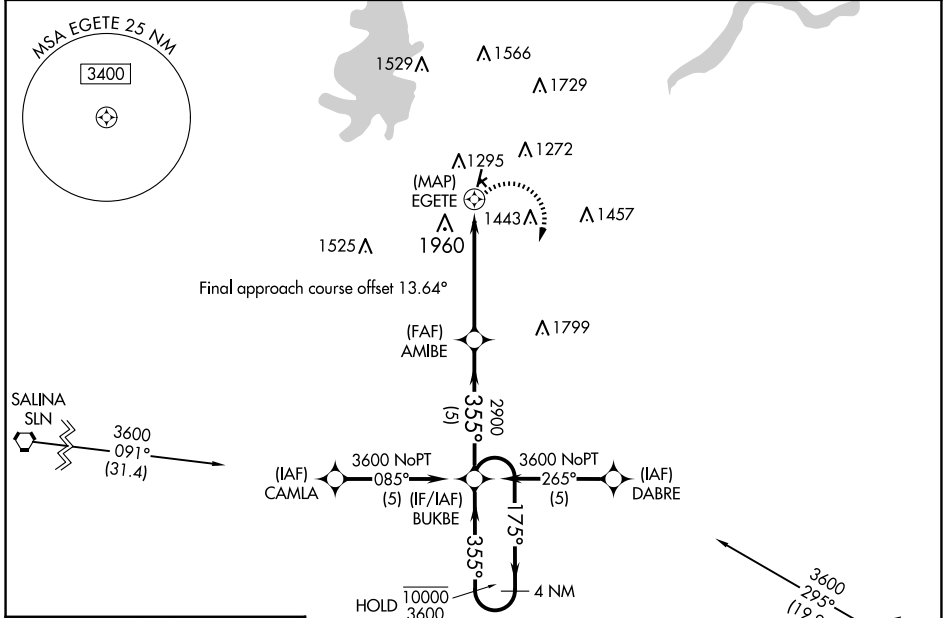
FREEMAN FLD (3JC)

RNP APCH.  
 ⚠ Circling Rwy 5, 23, 13, 31 NA. Circling NA west of Rwy 18-36.  
 ⚠ NA Procedure NA at night. Rwy 36 helicopter visibility reduction below 1 SM NA. Use Marshall AAF, KS altimeter setting.  
 ❄ -22°C

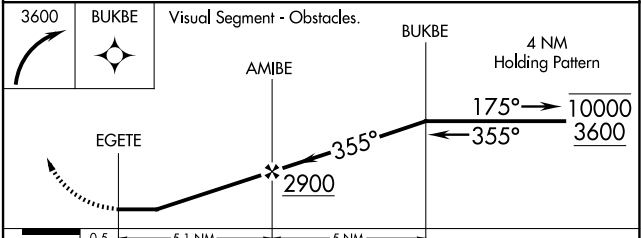
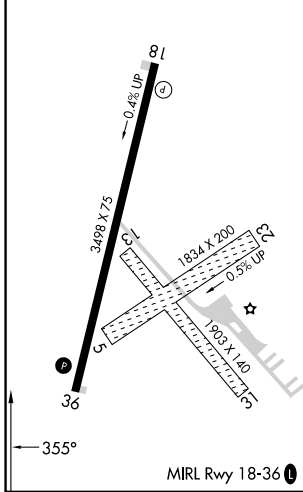
MISSED APPROACH: Climbing right turn to 3600 direct BUKBE and hold.

MARSHALL AAF GCA\*  
**121.25 269.05**

UNICOM  
**122.8 (CTAF) 1**



ELEV 1102	TDZE 1102
-----------	-----------



CATEGORY	A	B	C	D
LNAV MDA	2120-1¼ 1018 (1100-1¼)	2120-1½ 1018 (1100-1½)	NA	
<input checked="" type="checkbox"/> CIRCLING	2120-1¼ 1018 (1100-1¼)	2120-1½ 1018 (1100-1½)	NA	

NC-2, 07 AUG 2025 to 04 SEP 2025

NC-2, 07 AUG 2025 to 04 SEP 2025