

WAAS CH <b>50400</b> <b>W13A</b>	APP CRS <b>133°</b>	Rwy Idg TDZE <b>1306</b> Apt Elev <b>1306</b>	<b>6095</b>
----------------------------------------	------------------------	-----------------------------------------------------	-------------

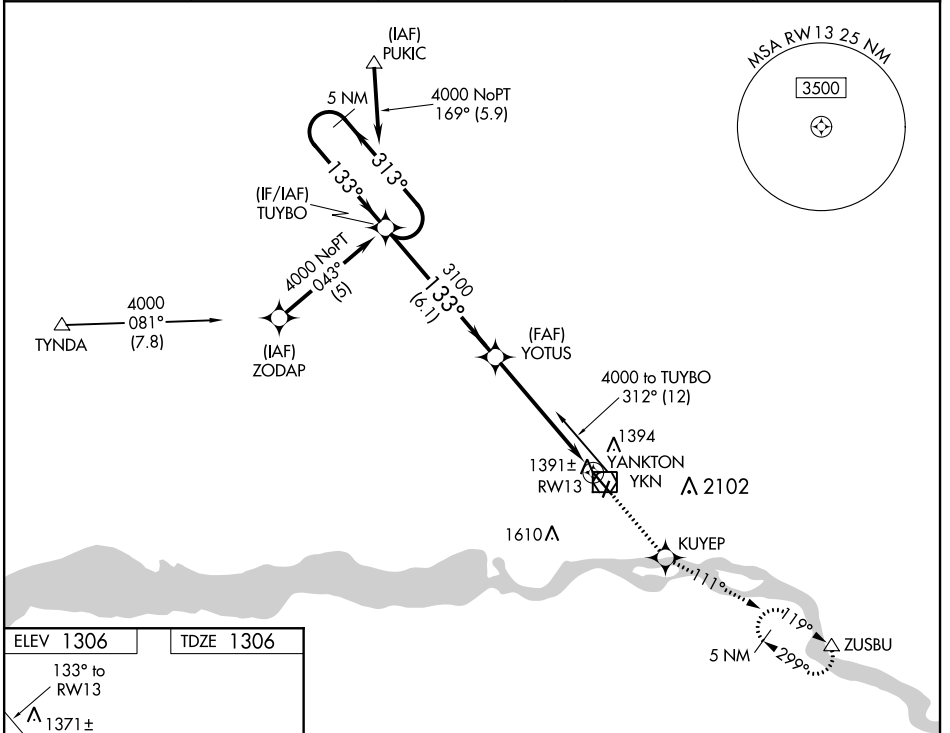
# RNAV (GPS) RWY 13

CHAN GURNEY MUNI (YKN)

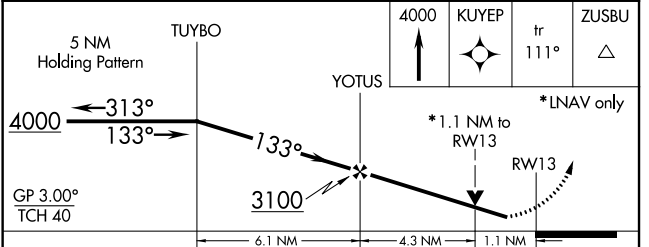
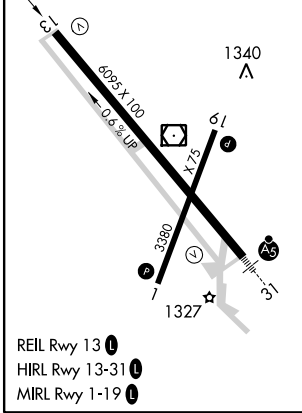
**⚠** If local altimeter setting not received, use Sioux Falls altimeter setting and increase all DAs/MDAs 140 feet.  
**⚠** DME/DME RNP -0.3 NA.  
 Visibility reduction by helicopters NA.

**MISSED APPROACH:** Climb to 4000 direct KUYEP and via 111° track to ZUSBU and hold, continue climb-in-hold to 4000.

AWOS-3PT <b>119.05</b>	MINNEAPOLIS CENTER <b>125.025 235.625</b>	HURON RADIO <b>122.55</b>	GCO <b>121.725</b>	UNICOM <b>122.8 (CTAF)</b>
---------------------------	----------------------------------------------	------------------------------	-----------------------	-------------------------------



ELEV 1306	TDZE 1306
-----------	-----------



CATEGORY	A	B	C	D
LPV DA	1556-1 250 (300-1)			
LNAV MDA	1700-1 394 (400-1)			1700-1¼ 394 (400-1¼)
CIRCLING	1780-1 474 (500-1)		1780-1½ 474 (500-1½)	1860-2 554 (600-2)

NC-1, 08 NOV 2018 to 06 DEC 2018

NC-1, 08 NOV 2018 to 06 DEC 2018