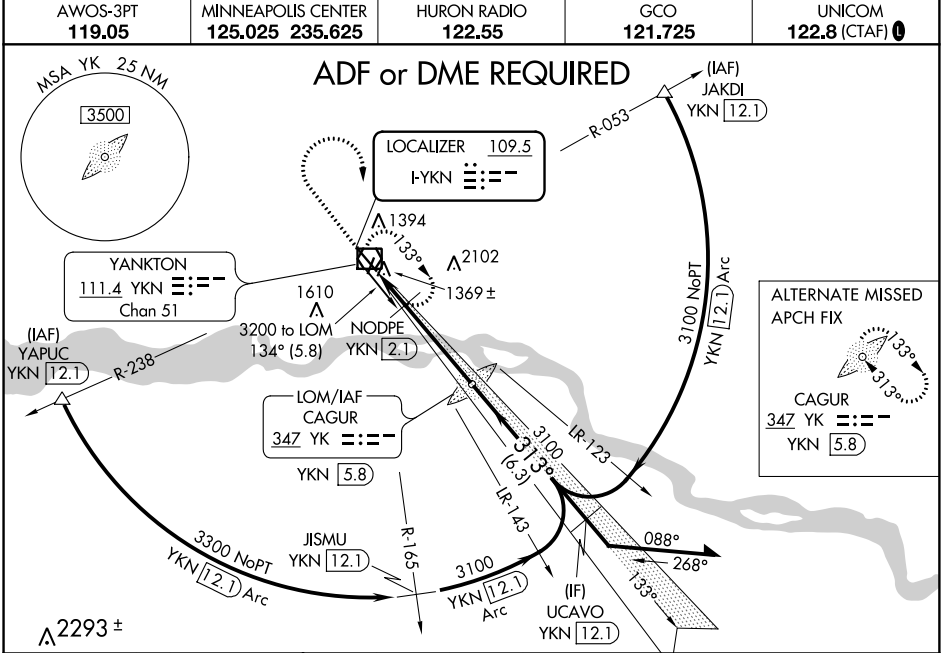


LOC I-YKN 109.5	APP CRS 313°	Rwy Idg TDZE Apt Elev 6095 1285 1306
---------------------------	------------------------	--

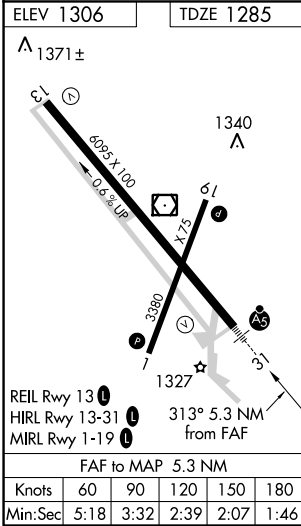
ILS or LOC RWY 31 CHAN GURNEY MUNI (YKN)

<p>When VGSI inop, Circling Rwy 19 NA at night. When local altimeter setting not received, use Sioux Falls altimeter setting and increase all DA 130 feet and all MDA 140 feet, and increase S-ILS 31 visibility all Cats 1/8 mile, S-LOC 31 Cats C and D 3/8 mile, and Circling Cat C 3/8 mile, Cat D 1/4 mile. NODPE fix minimums: increase S-LOC 31 visibility Cats C and D 3/8 mile, Circling Cats C and D 1/4 mile. For inoperative MALSR when using Sioux Falls altimeter setting, increase S-ILS 31 all Cats visibility to 1 1/8 mile.</p>	<p>MALSR</p>	<p>MISSED APPROACH: Climb to 3000 then climbing right turn to 3200 direct YKN VOR/DME and hold.</p>
	<p>AWOS-3PT 119.05 MINNEAPOLIS CENTER 125.025 235.625 HURON RADIO 122.55 GCO 121.725 UNICOM 122.8 (CTAF)</p>	



ALTERNATE MISSED APCH FIX

CAGUR
347 YK
YKN [5.8]



ELEV 1306	TDZE 1285	3000	3200	YKN	YK LOM YKN [5.8]	VGSI and ILS glidepath not coincident (VGSI Angle 3.00/TCH 48).
<p>*1920 when using Sioux Falls altimeter setting. NODPE YKN [2.1]</p> <p>*LOC only YKN [0.5]</p>				<p>6000</p> <p>3040</p> <p>1780*</p> <p>1.6 NM 3.7 NM</p>		
<p>Remain within 10 NM</p> <p>133° 313°</p> <p>3200</p> <p>3100</p> <p>GS 3.00° TCH 51</p>						

CATEGORY	A	B	C	D
S-ILS 31	1485-1/2 200 (200-1/2)			
S-LOC 31	1780-1/2	495 (500-1/2)	1780-1	495 (500-1)
CIRCLING	1780-1	474 (500-1)	1780-1 1/2	1860-2 474 (500-1 1/2) 554 (600-2)
NODPE FIX MINIMUMS (DME REQUIRED)				
S-LOC 31	1620-1/2	335 (400-1/2)	1620-5/8	335 (400-5/8)
CIRCLING	1780-1	474 (500-1)	1780-1 1/2	1860-2 474 (500-1 1/2) 554 (600-2)

NC-1, 19 JUL 2018 to 16 AUG 2018

NC-1, 19 JUL 2018 to 16 AUG 2018