

WAAS CH <b>93731</b> <b>W31A</b>	APP CRS <b>319°</b>	Rwy Idg <b>4399</b> TDZE <b>1943</b> Apt Elev <b>1944</b>
--	------------------------	---

# RNAV (GPS) RWY 31

MANDAN MUNI (Y19)

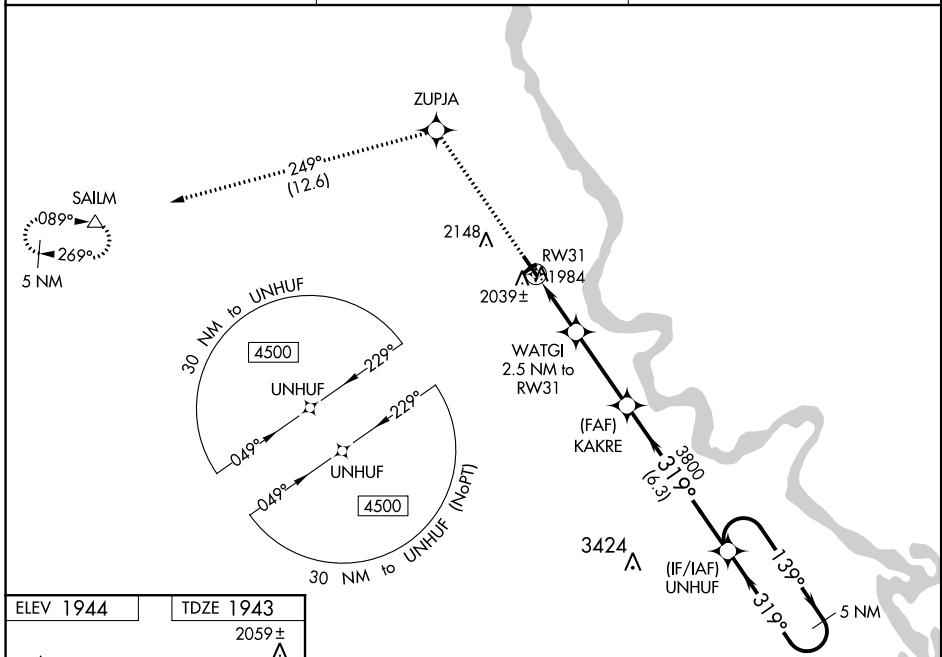
**ASR** Baro-VNAV NA when using Bismarck altimeter setting. For uncompensated Baro-VNAV systems, LNAV/VNAV NA below -18°C (0°F) or above 54°C (130°F). DME/DME RNP-0.3 NA. When local altimeter setting not received, use Bismarck altimeter setting and increase all DA 54 feet and LNAV/VNAV all Cats visibility ½ mile, increase all MDA 60 feet and LNAV Cat C/D visibility ½ mile and Circling Cat D ¼ mile. Helicopter visibility reduction below ¾ SM NA. Circling to Rwys 4 and 22 NA.

**MISSED APPROACH:** Climb to 4600 direct ZUPJA and on track 249° to SAILM and hold.

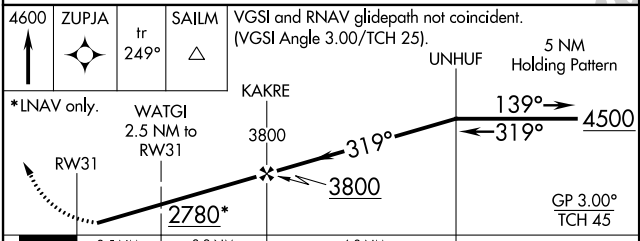
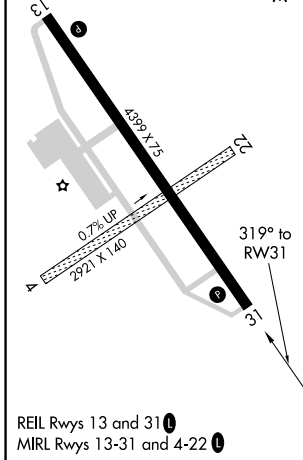
AWOS-3  
**118.225**

BISMARCK APP CON \*  
**126.3 298.9**

UNICOM  
**122.8 (CTAF) 0**



ELEV 1944	TDZE 1943
	2059± A



CATEGORY	A	B	C	D
LPV DA		2193-1	250 (300-1)	
LNAV/VNAV DA		2220-1	277 (300-1)	
LNAV MDA		2300-1	357 (400-1)	
<b>C</b> CIRCLING	2360-1 416 (500-1)	2460-1 516 (600-1)	2460-1½ 516 (600-1½)	2560-2 616 (700-2)