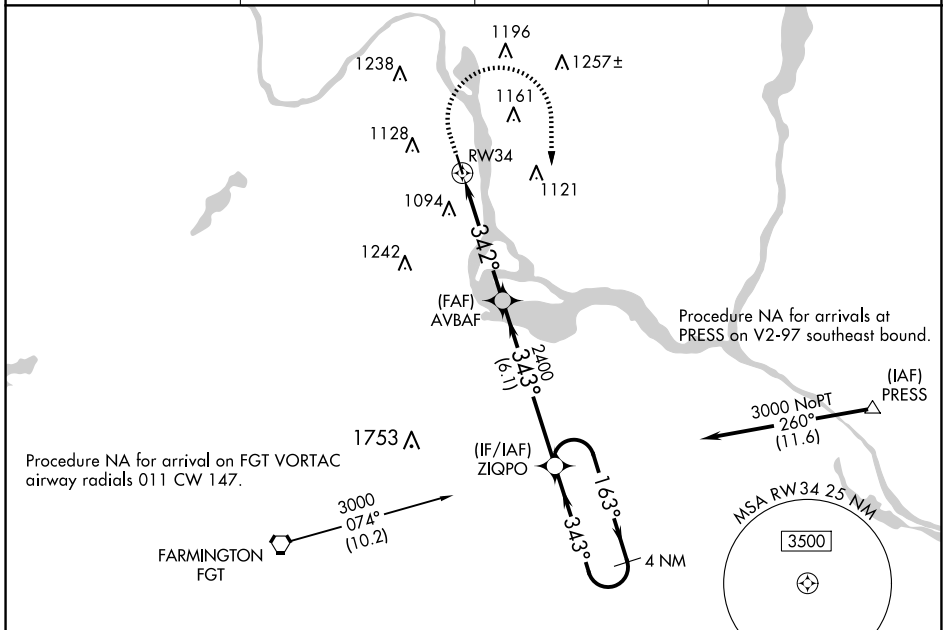


WAAS CH 99636 W34A	APP CRS 342°	Rwy Idg TDZE Apt Elev	4002 820 821
----------------------------------------	------------------------	-----------------------------	-----------------------------------------

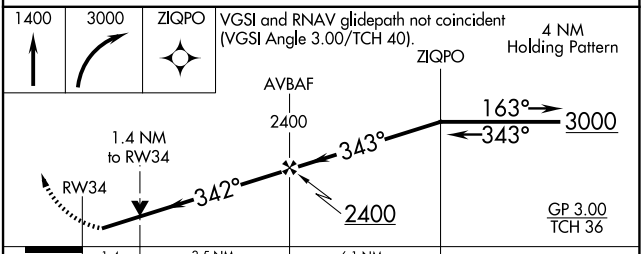
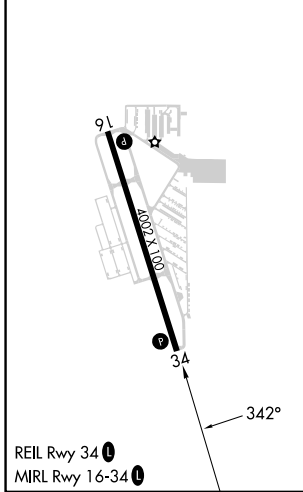
RNAV (GPS) RWY 34

SOUTH ST PAUL MUNI/RICHARD E FLEMING FLD (SGS)

RNP APCH - GPS.		MISSED APPROACH: Climb to 1400 then climbing right turn to 3000 direct ZIQPO and hold.	
AWOS-3 119.425	MINNEAPOLIS APP CON 121.2 335.65	CLNC DEL 118.2	UNICOM 122.7 (CTAF) 0



ELEV 821	TDZE 820
----------	----------



CATEGORY	A	B	C	D
LPV DA		1102-1	282 (300-1)	
LNAV/VNAV DA		1378-1½	558 (600-1½)	
LNAV MDA	1300-1	480 (500-1)	1300-1½	480 (500-1½)
C CIRCLING	1400-1 579 (600-1)	1540-1 719 (800-1)	1540-2 719 (800-2)	1620-2 ½ 799 (800-2½)

NC-1, 07 AUG 2025 to 04 SEP 2025

NC-1, 07 AUG 2025 to 04 SEP 2025