

WAAS CH <b>70339</b> <b>W34A</b>	APP CRS <b>340°</b>	Rwy Idg TDZE Apt Elev	<b>3400</b> <b>1107</b> <b>1107</b>
--	------------------------	-----------------------------	---

# RNAV (GPS) RWY 34

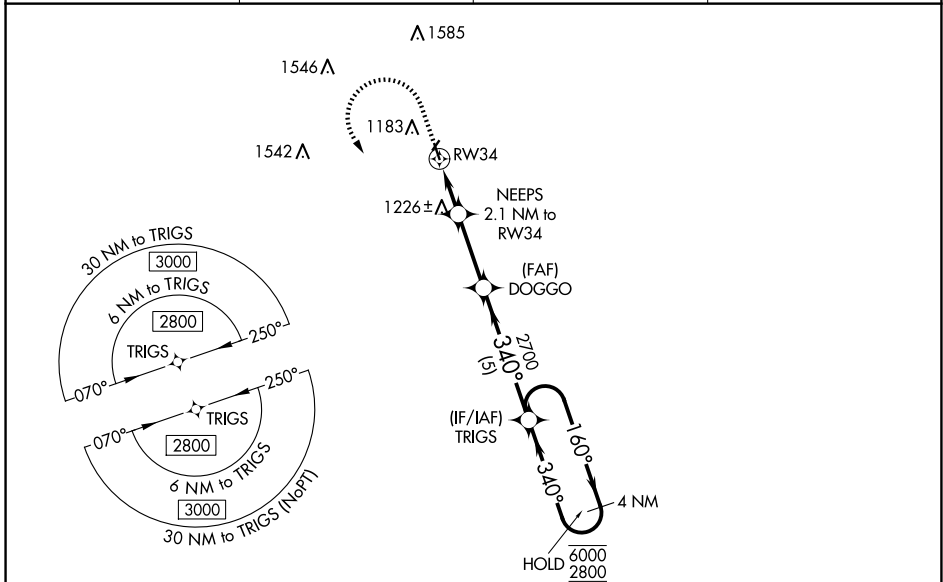
BLUE EARTH MUNI (SBU)

RNP APCH - GPS.

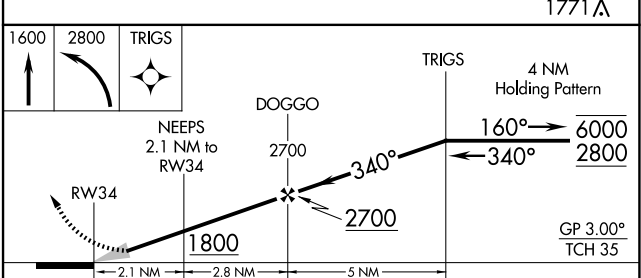
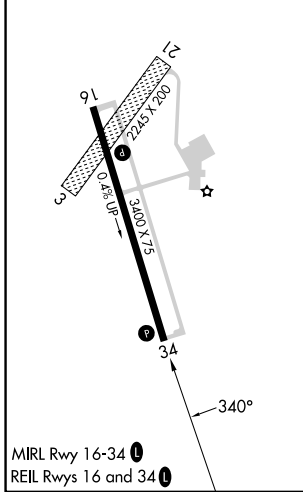
**NA** Baro-VNAV NA. Rwy 34 helicopter visibility reduction below 1 SM NA. Circling NA to Rwy 3 and 21. Use FRM altimeter setting; when not received, use FXY altimeter setting and increase LPV DA to 1443 feet and all visibilities 1/8 SM. Increase LNAV/VNAV DA to 1593 feet; increase all MDAs 60 feet and visibility Cat C 1/4 SM.

MISSED APPROACH: Climb to 1600 then climbing left turn to 2800 direct TRIGS and hold.

FRM AWOS-3PT <b>120.025</b>	MINNEAPOLIS CENTER <b>127.75 257.7</b>	GCO <b>121.725</b>	UNICOM <b>122.8 (CTAF)</b>
--------------------------------	---	-----------------------	-------------------------------



ELEV 1107	TDZE 1107
-----------	-----------



CATEGORY	A	B	C	D
LPV DA	1398-1 291 (300-1)			NA
LNAV/VNAV DA	1548-1 3/8 441 (500-1 3/8)			NA
LNAV MDA	1520-1	413 (500-1)	1520-1 1/8 413 (500-1 1/8)	NA
<b>C</b> CIRCLING	1560-1 453 (500-1)	1580-1 473 (500-1)	1720-1 3/4 613 (700-1 3/4)	NA

NC-1, 15 MAY 2025 to 12 JUN 2025

NC-1, 15 MAY 2025 to 12 JUN 2025