

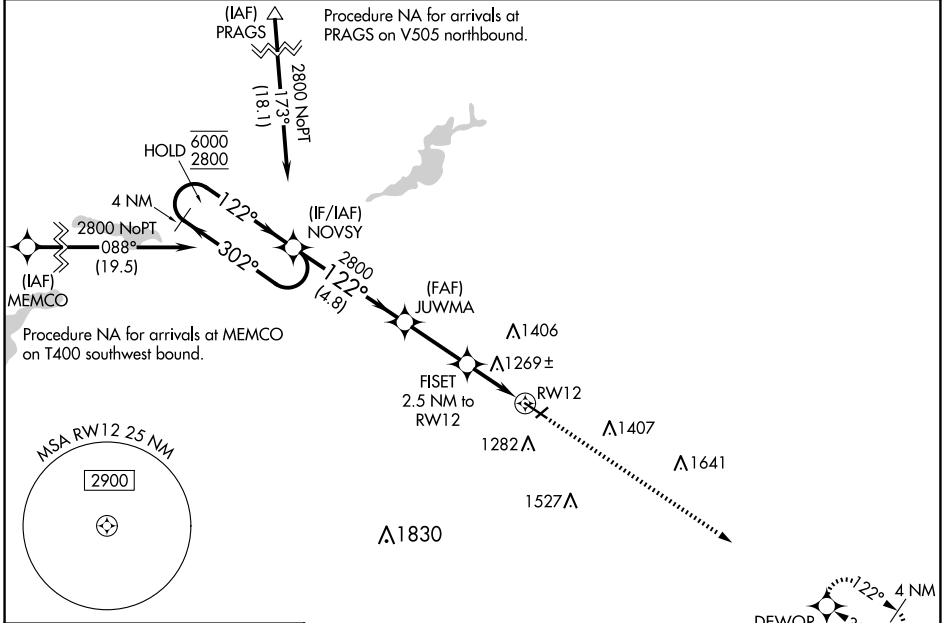
WAAS CH <b>82627</b> <b>W12A</b>	APP CRS <b>122°</b>	Rwy Idg <b>5500</b> TDZE <b>1127</b> Apt Elev <b>1145</b>
--	------------------------	---

# RNAV (GPS) RWY 12

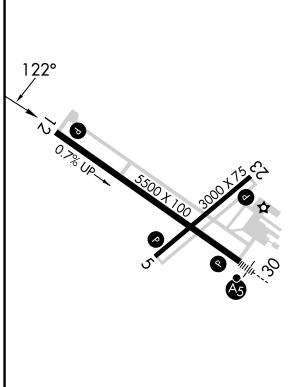
OWATONNA DEGNER RGNL (OWA)

RNP APCH - GPS.	MISSED APPROACH: Climb to 2900 direct DEWOR and hold.
<p><b>⚠</b> Rwy 12 helicopter visibility reduction below <math>\frac{3}{4}</math> SM NA. For uncompensated Baro-VNAV systems, LNAV/VNAV NA below -17°C or above 54°C.</p>	

AWOS-3 <b>128.325</b>	ROCHESTER APP CON * <b>119.8 251.125</b>	UNICOM <b>122.7 (CTAF)</b>
--------------------------	---	-------------------------------



ELEV 1145	TDZE 1127
-----------	-----------



	4 NM Holding Pattern	NOVSY	JUWMA	FISET 2.5 NM to RW12	2900	DEWOR
	6000 ← 302°	2800 → 122°	2800 → 122°	1940		
	GP 3.00°					
	TCH 40					
		4.8 NM	2.7 NM	1.3 NM	1.2 NM	
CATEGORY	A	B	C	D		
LPV DA		1420- $\frac{7}{8}$	293 (300- $\frac{7}{8}$ )			
LNAV/VNAV DA		1400- $\frac{7}{8}$	273 (300- $\frac{7}{8}$ )			
LNAV MDA	1520-1	393 (400-1)	1520-1 $\frac{1}{8}$	393 (400-1 $\frac{1}{8}$ )		
<b>C</b> CIRCLING	1640-1 495 (500-1)	1700-1 555 (600-1)	1720-1 $\frac{1}{2}$ 575 (600-1 $\frac{1}{2}$ )	1880-2 $\frac{1}{4}$ 735 (800-2 $\frac{1}{4}$ )		

MIRL Rwy 5-23  
REIL Rwy 5, 12, and 23  
HIRL Rwy 12-30

NC-1, 15 MAY 2025 to 12 JUN 2025

NC-1, 15 MAY 2025 to 12 JUN 2025