

WAAS CH 82730 W04A	APP CRS 038°	Rwy Idg 3200 TDZE 1076 Apt Elev 1076
--	------------------------	---

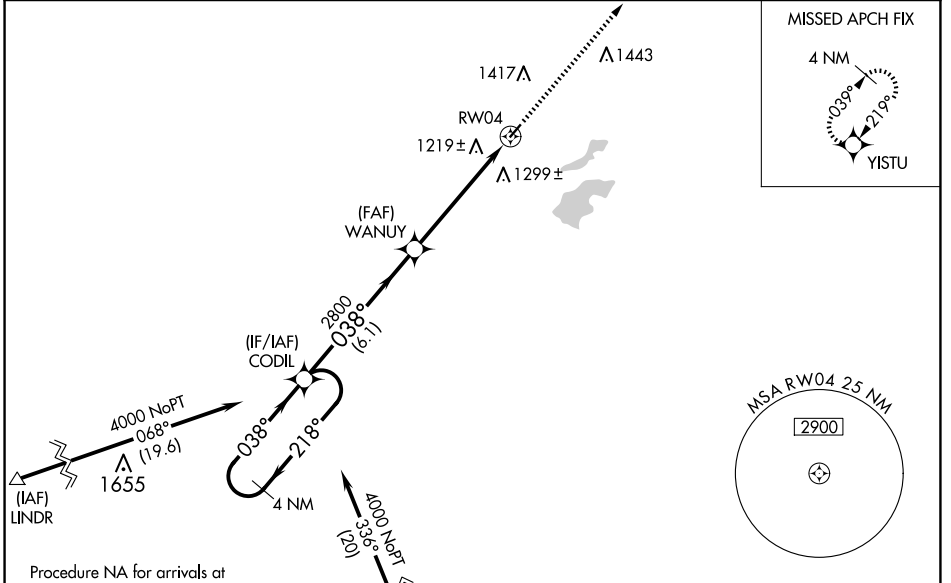
RNAV (GPS) RWY 4

MOOSE LAKE CARLTON COUNTY (MZH)

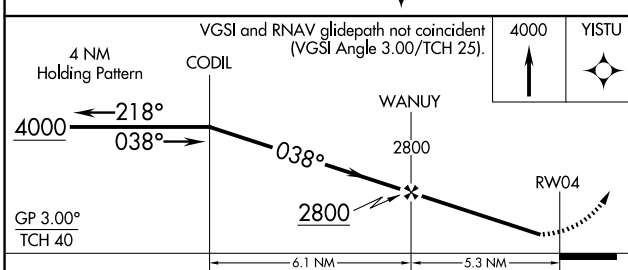
▽ For uncompensated Baro-VNAV systems, LNAV/VNAV NA below -17°C (2°F) or above 54°C (130°F). Straight-in minimums NA at night. DME/DME RNP-0.3 NA. Visibility reduction by helicopters NA. Baro-VNAV NA when using Cloquet altimeter setting. When local altimeter setting not received, use Cloquet altimeter setting and increase all DA 77 feet and all MDA 80 feet; increase LPV all Cats visibility 1/8 mile and LNAV/VNAV all Cats visibility 3/8 mile.

MISSED APPROACH: Climb to 4000 direct YISTU and hold.

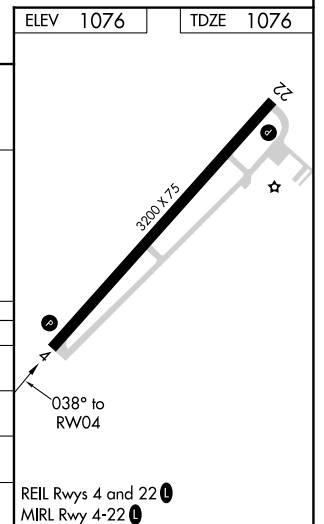
AWOS-3 119.125	DULUTH APP CON 125.45 233.7	CTAF 122.9
--------------------------	---------------------------------------	----------------------



ELEV 1076 TDZE 1076



CATEGORY	A	B	C	D
LPV DA	1326-1	250 (300-1)		NA
LNAV/VNAV DA	1529-1½	453 (500-1½)		NA
LNAV MDA	1560-1	484 (500-1)		NA
CIRCLING	1660-1 584 (600-1)	1740-1 664 (700-1)		NA



NC-1, 15 MAY 2025 to 12 JUN 2025

NC-1, 15 MAY 2025 to 12 JUN 2025