

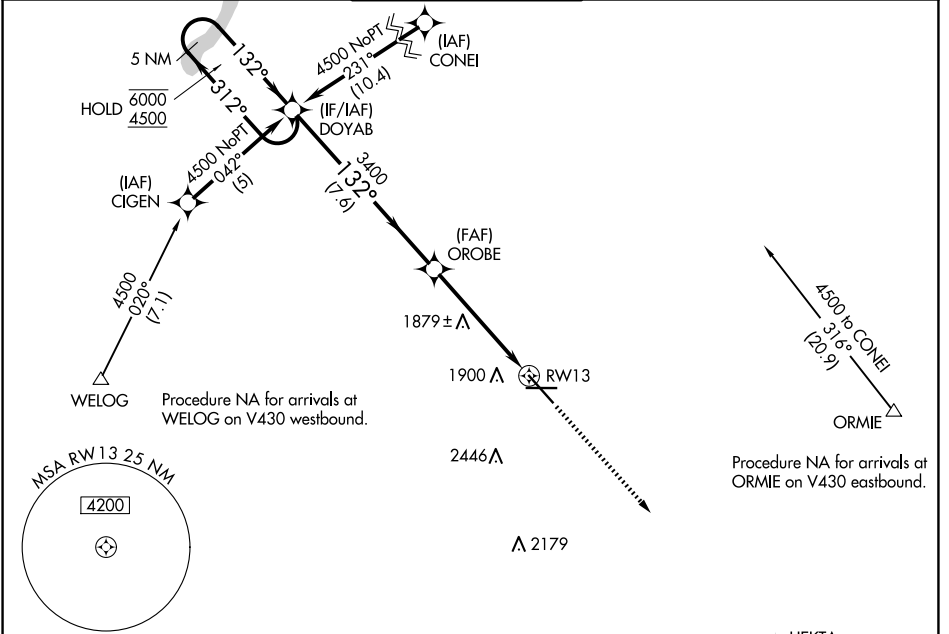
WAAS CH <b>70399</b> <b>W13A</b>	APP CRS <b>132°</b>	Rwy Idg TDZE Apt Elev	<b>7700</b> <b>1702</b> <b>1716</b>
--	------------------------	-----------------------------	---

# RNAV (GPS) RWY 13

MINOT INTL (MOT)

RNP APCH.	MISSED APPROACH: Climb to 4000 direct HEKTA and hold.
▼ For uncompensated Baro-VNAV systems, LNAV/VNAV NA below -18°C or above 54°C.	

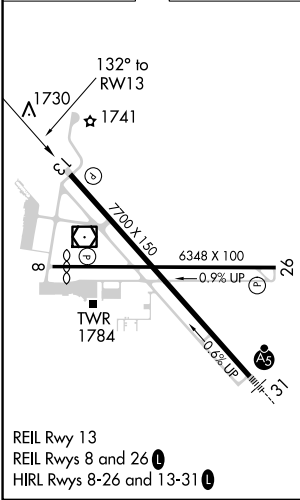
ASOS <b>118.725</b>	MINOT APP CON * <b>119.6 363.8</b>	MAGIC CITY TOWER * <b>118.2 (CTAF) 0 251.125</b>	GND CON <b>121.9</b>	UNICOM <b>122.95</b>
------------------------	---------------------------------------	---	-------------------------	-------------------------



NC-1, 15 MAY 2025 to 12 JUN 2025

NC-1, 15 MAY 2025 to 12 JUN 2025

ELEV 1716	<b>D</b>	TDZE 1702
-----------	----------	-----------



3149 Δ	5 NM Holding Pattern	DOYAB	OROBE	HEKTA
6000 ← 312°	4500 → 132°	3400	4000	HEKTA
GP 3.00°	TCH 49	3400	*1.2 NM to RW13	*LNAV only.
		7.6 NM	3.9 NM	1.2
CATEGORY	A	B	C	D
LPV DA	2021-1 319 (400-1)			
LNAV/VNAV DA	2181-1¾ 479 (500-1¾)			
LNAV MDA	2140-1	438 (500-1)	2140-1¼	2140-1½
			438 (500-1¼)	438 (500-1½)
CIRCLING	2200-1	2240-1	2800-3 1084 (1100-3)	
	484 (500-1)	524 (600-1)		