

WAAS CH 97616 W08A	APP CRS 084°	Rwy Idg TDZE Apt Elev	5955 1712 1716
--	------------------------	-----------------------------	---

RNAV (GPS) RWY 8

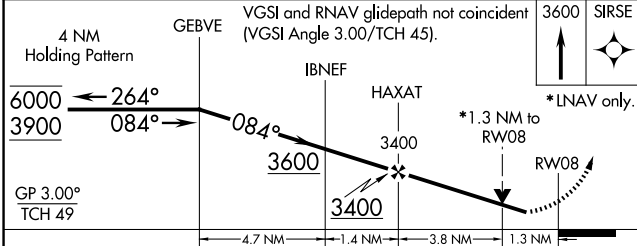
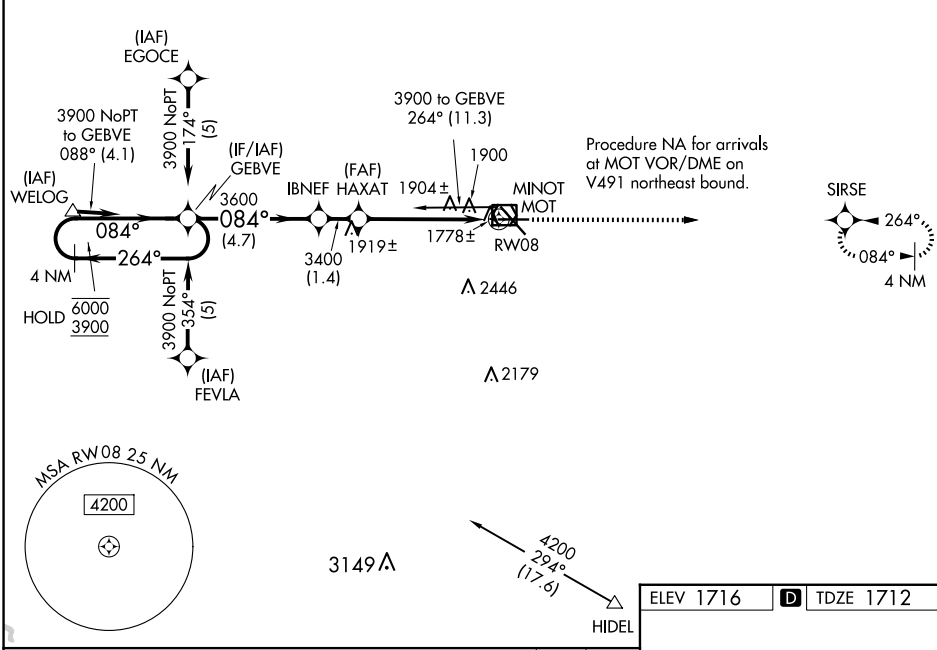
MINOT INTL (MOT)

RNP APCH.

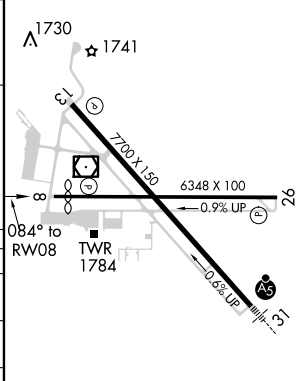
▽ Rwy 8 helicopter visibility reduction below $\frac{3}{4}$ SM NA.
▲ For uncompensated Baro-VNAV systems, LNAV/VNAV NA below -18°C or above 54°C.

MISSED APPROACH:
Climb to 3600 direct SIRSE and hold.

ASOS 118.725	MINOT APP CON * 119.6 363.8	MAGIC CITY TOWER * 118.2 (CTAF) 0 251.125	GND CON 121.9	UNICOM 122.95
------------------------	---------------------------------------	---	-------------------------	-------------------------



ELEV 1716	D TDZE 1712
-----------	--------------------



CATEGORY	A	B	C	D
LPV DA	1991-1 279 (300-1)			
LNAV/ VNAV DA	2218-1 $\frac{3}{4}$ 506 (600-1 $\frac{3}{4}$)			
LNAV MDA	2160-1 448 (500-1)	2160-1 $\frac{3}{8}$ 448 (500-1 $\frac{3}{8}$)	2160-1 $\frac{1}{2}$ 448 (500-1 $\frac{1}{2}$)	
CIRCLING	2200-1 484 (500-1)	2240-1 524 (600-1)	2800-3 1084 (1100-3)	

REIL Rwy 13
REIL Rwy 8 and 26
HIRL Rwy 8-26 and 13-31

NC-1, 15 MAY 2025 to 12 JUN 2025

NC-1, 15 MAY 2025 to 12 JUN 2025