

WAAS CH 86938 W18A	APP CRS 176°	Rwy Idg TDZE Apt Elev	5513 1298 1304
--	------------------------	-----------------------------	---

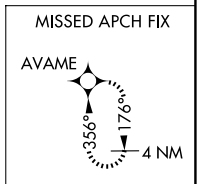
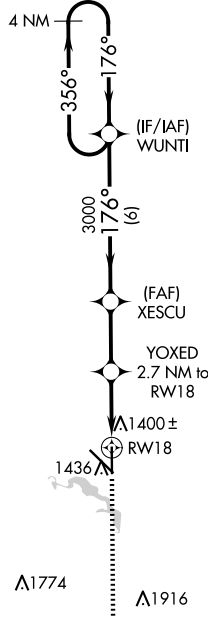
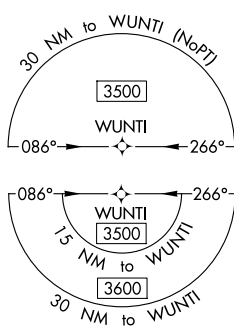
RNAV (GPS) RWY 18

MITCHELL MUNI (MHE)

⚠ For uncompensated Baro-VNAV systems, LNAV/VNAV NA below -20°C (-4°F) or above 54°C (130°F). DME/DME RNP-0.3 NA. When local altimeter setting not received use Huron Rgnl altimeter setting and increase LPV DA to 1637, LNAV/VNAV DA to 1685 and increase all MDA 100 feet. Increase LPV visibility all Cats to 1½ mile, LNAV/VNAV visibility all Cats to 1¾ mile and LNAV Cats C/D to 1¾ mile. Increase Circling Cat C visibility to 1¾ mile. Baro VNAV and VDP NA when using Huron Rgnl altimeter setting.

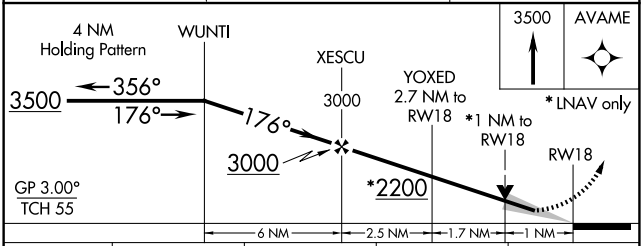
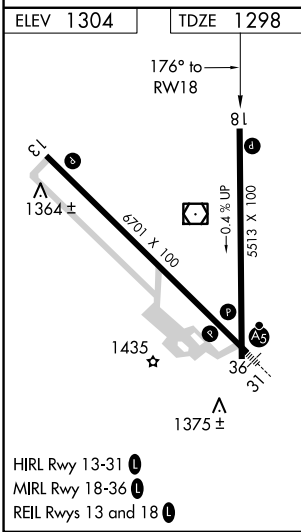
MISSED APPROACH: Climb to 3500 direct AVAME and hold.

ASOS 124.175	MINNEAPOLIS CENTER 126.25 339.8	UNICOM 122.8 (CTAF) 0
------------------------	---	---------------------------------



NC-1, 15 MAY 2025 to 12 JUN 2025

NC-1, 15 MAY 2025 to 12 JUN 2025



CATEGORY	A	B	C	D
LPV DA		1548-1	250 (300-1)	
LNAV/VNAV DA		1596-1	298 (300-1)	
LNAV MDA		1660-1	362 (400-1)	
C CIRCLING	1740-1 436 (500-1)	1760-1 456 (500-1)	1820-1½ 516 (600-1½)	1860-2 556 (600-2)