

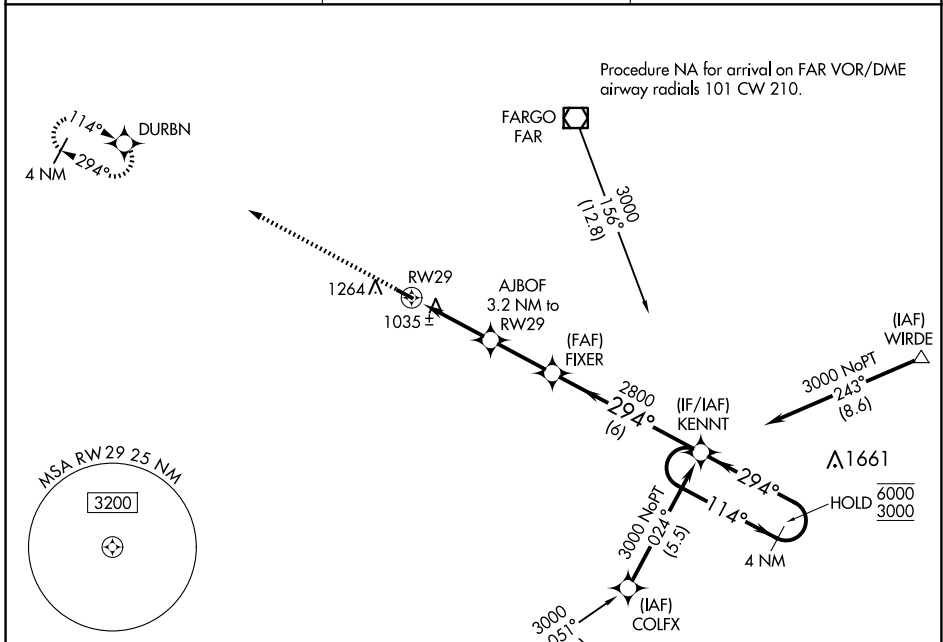
APP CRS	Rwy Idg	<b>3300</b>
<b>294°</b>	TDZE	<b>947</b>
	Apt Elev	<b>947</b>

# RNAV (GPS) RWY 29

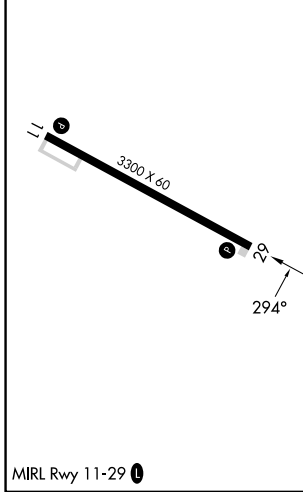
ROBERT ODEGAARD FLD (K74)

RNP APCH-GPS.	MISSED APPROACH: Climb to 3000 direct DURBN and hold.
<p><b>V</b> Use Fargo altimeter setting, when not received, use Moorhead altimeter setting.</p> <p><b>A</b> NA</p>	

FAR ASOS <b>124.5 379.2</b>	FARGO APP CON <b>120.4 377.15</b>	CTAF <b>122.9</b> <b>0</b>
--------------------------------	--------------------------------------	-------------------------------



ELEV <b>947</b>	TDZE <b>947</b>
-----------------	-----------------



3000	DURBN	VGSI and descent angles not coincident (VGSI Angle 3.00/TCH 25).			
		AJBOF 3.2 NM to RW29	FIXER	KENNT	4 NM Holding Pattern
		≤ 3.00° TCH 40	2800	294°	114° → 6000 ← 294° 3000
		3.2 NM	2.5 NM	6 NM	
CATEGORY	A	B	C	D	
LNAV MDA	1400-1	453 (500-1)		NA	
<b>C</b> CIRCLING	1680-1	733 (800-1)		NA	

NC-1, 15 MAY 2025 to 12 JUN 2025

NC-1, 15 MAY 2025 to 12 JUN 2025