

WAAS CH <b>78406</b> W31A	APP CRS <b>313°</b>	Rwy Idg <b>7400</b> TDZE <b>1166</b> Apt Elev <b>1185</b>
---------------------------------	------------------------	---

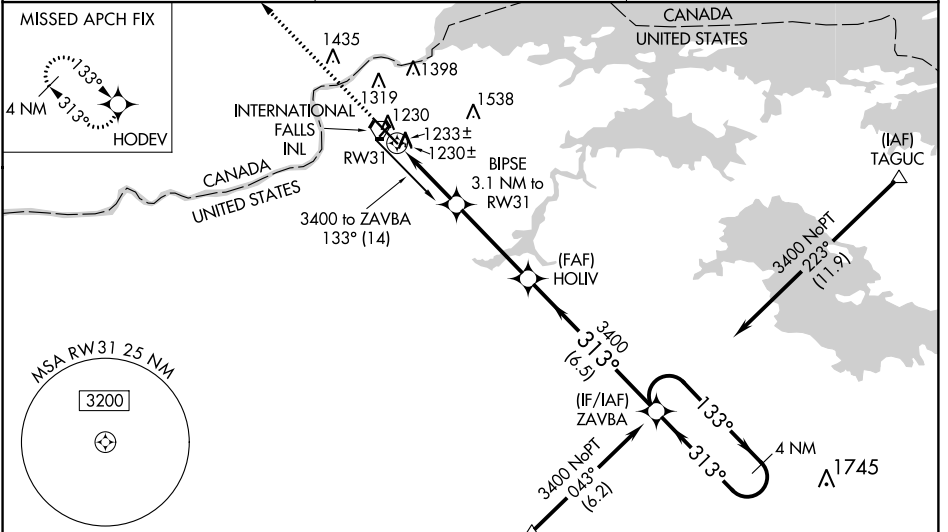
# RNAV (GPS) RWY 31

FALLS INTL-EINARSON FIELD (INL)

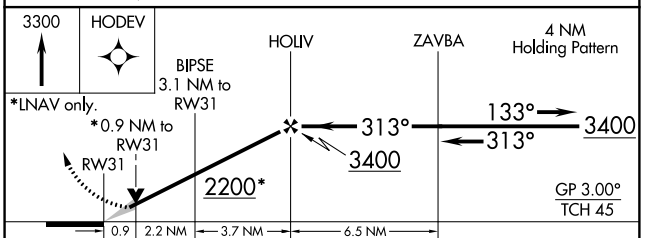
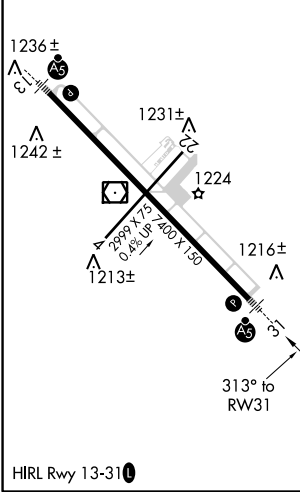
When local altimeter setting not received, use Baudette altimeter setting and increase all DAs 127 feet, and LPV and LNAV/VNAV visibility 1/2 mile all Cats, increase all MDAs 140 feet and LNAV Cat C visibility 1/2 mile and Circling Cat C and D visibility 1/4 mile. For inoperative MALS/R when using Baudette altimeter setting, increase LPV visibility 1/2 mile all Cats. For inoperative MALS/R, increase LPV visibility 1/2 mile all Cats, inoperative table does not apply to LNAV Cat D. VDP NA when using Baudette altimeter setting. Baro-VNAV NA when using Baudette altimeter setting. Circling to Rwy 4-22 NA at night. For uncompensated Baro-VNAV systems, LNAV/VNAV NA below -17°C (2°F) or above 47°C (116°F). DME/DME RNP-0.3 NA.

**MALS/R**  
 MISSED APPROACH: Climb to 3300 direct HODEV and hold.

ASOS <b>120.0</b>	MINNEAPOLIS CENTER <b>120.9 377.1</b>	UNICOM <b>122.8 (CTAF)</b>
----------------------	--	-------------------------------



ELEV 1185	<b>D</b>	TDZE 1166
-----------	----------	-----------



CATEGORY	A	B	C	D
LPV DA		1462-1/2	296 (300-1/2)	
LNAV/VNAV DA		1500-3/4	334 (400-3/4)	
LNAV MDA		1500-1/2	334 (400-1/2)	1500-1 334 (400-1)
CIRCLING	1620-1 435 (500-1)	1680-1 495 (500-1)	1680-1 1/2 495 (500-1 1/2)	1780-2 595 (600-2)

NC-1, 04 JAN 2018 to 01 FEB 2018

NC-1, 04 JAN 2018 to 01 FEB 2018