

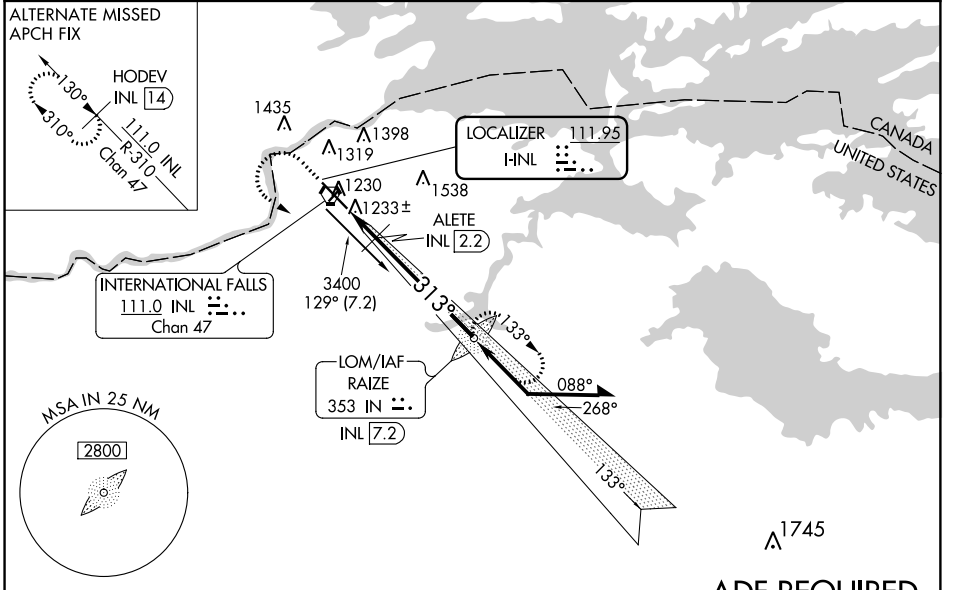
LOC I-INL <b>111.95</b>	APP CRS <b>313°</b>	Rwy Idg <b>7400</b>
		TDZE <b>1166</b>
		Apt Elev <b>1185</b>

# COPTER ILS or LOC RWY 31

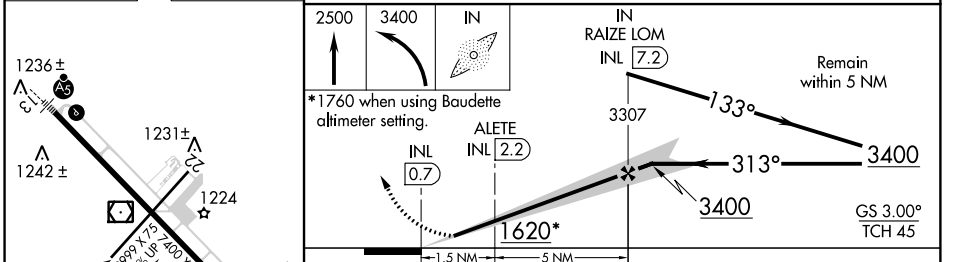
FALLS INTL-EINARSON FIELD (INL)

<p>When local altimeter setting not received, use Baudette altimeter setting and increase DA 127 feet and ILS visibility <math>\frac{3}{8}</math> mile, increase all MDA 140 feet and LOC visibility <math>\frac{3}{8}</math> mile, increase ALETE fix minimums visibility <math>\frac{1}{4}</math> mile. For inoperative MALSRS, increase H-ILS 31 visibility to <math>\frac{1}{2}</math> mile. For inoperative MALSRS when using Baudette altimeter setting, increase H-ILS 31 visibility to <math>1\frac{1}{8}</math> and H-LOC 31 visibility to 1 mile.</p>	<p>MALSRS</p>	<p>MISSED APPROACH: Climb to 2500 then climbing left turn to 3400 direct RAIZE LOM and hold.</p>
---	---------------	--

ASOS <b>120.0</b>	MINNEAPOLIS CENTER <b>120.9 377.1</b>	UNICOM <b>122.8 (CTAF)</b>
----------------------	--	-------------------------------



ELEV 1185	D	TDZE 1166
-----------	---	-----------



1236±	1231±	1224	1216±	1213±
1242±				
HIRL Rwy 13-31 313° 6.5 NM from FAF				
FAF to MAP 6.5 NM				
Knots	45	60	75	90
Min:Sec	8:40	6:30	5:12	4:20
3:43				
CATEGORY	COPTER	B	C	D
H-ILS 31	1366- $\frac{1}{4}$ 200 (200- $\frac{1}{4}$ )		NA	
H-LOC 31	1620- $\frac{3}{8}$ 454 (500- $\frac{3}{8}$ )		NA	
CIRCLING		NA		
ALETE FIX MINIMUMS				
H-LOC 31	1520- $\frac{1}{4}$ 354 (400- $\frac{1}{4}$ )		NA	
CIRCLING		NA		

NC-1, 04 JAN 2018 to 01 FEB 2018

NC-1, 04 JAN 2018 to 01 FEB 2018